

Chartbook Review

(charts as of 05/21/2025)

Most Requested Names:

ABBV, ANET, BA, BROS, BX, MSTR, SPOT, UBER, WMT

The FRED Report

4514 Chamblee-Dunwoody
Dunwoody, GA 30338

Web:

www.theFREDreport.com

Phone: 404-875-FRED

fred@thefredreport.com

By Fred Meissner, CMT

www.theFREDreport.com

Chartbook: Stocks of Interest

Sym	Company	trkPrice	Sector	Industry
VMC	Vulcan Materials Co	270.54	Basic Materials Sector	Building Materials
FCX	Freeport-McMoran Inc	38.01	Basic Materials Sector	Copper
SBSW	Sibanye Stillwater Ltd	5.72	Basic Materials Sector	Gold
LYB	Lyondellbasell Industries Nv O	56.55	Basic Materials Sector	Specialty Chemicals
TMUS	T-Mobile US Inc.	240.76	Communication Services Sector	Telecom Services
AEO	American Eagle Outfitters Inc	10.64	Consumer Cyclical Sector	Apparel Stores
LULU	Lululemon Athletica Inc.	317.56	Consumer Cyclical Sector	Apparel Stores
STLA	Stellantis N.V.	10.57	Consumer Cyclical Sector	Auto Manufacturers
APTIV	Aptiv	66.96	Consumer Cyclical Sector	Auto Parts
MBLY	Mobileye Global Inc	15.78	Consumer Cyclical Sector	Auto Parts
ONON	On Holding AG	59.14	Consumer Cyclical Sector	Footwear & Accessories
LOW	Lowe's Companies Inc	227.37	Consumer Cyclical Sector	Home Improvement Stores
BROS	Dutch Bros Inc	64.90	Consumer Cyclical Sector	Restaurants
CMG	Chipotle Mexican Grill	50.79	Consumer Cyclical Sector	Restaurants
EYE	National Vision Holdings Inc	18.65	Consumer Cyclical Sector	Specialty Retail
MELI	MercadoLibre Inc	2601.97	Consumer Cyclical Sector	Specialty Retail
TGT	Target Corporation	93.01	Consumer Defensive Sector	Discount Stores
WMT	Walmart Inc	96.43	Consumer Defensive Sector	Discount Stores
HIMS	Hims & Hers Health, Inc	58.00	Consumer Defensive Sector	Household & Personal Products
FANG	Diamondback Energy, Inc.	136.31	Energy Sector	Oil & Gas E&P
HAL	Halliburton Co	19.90	Energy Sector	Oil & Gas Equipment & Services
CVX	Chevron Corp	135.56	Energy Sector	Oil & Gas Integrated
EPD	Enterprise Products Part	31.79	Energy Sector	Oil & Gas Midstream
APO	Apollo Asset Management Inc.	130.68	Financial Services Sector	Asset Management
BX	Blackstone Inc	137.49	Financial Services Sector	Asset Management
TPG	TPG Partners LLC	47.27	Financial Services Sector	Asset Management
MUFG	Mitsubishi UFJ Financial Group, In	13.81	Financial Services Sector	Banks - Global
HOOD	Robinhood Markets Inc Class A	63.86	Financial Services Sector	Capital Markets
MARA	MARA Holdings Inc	15.84	Financial Services Sector	Capital Markets
MS	Morgan Stanley	125.30	Financial Services Sector	Capital Markets

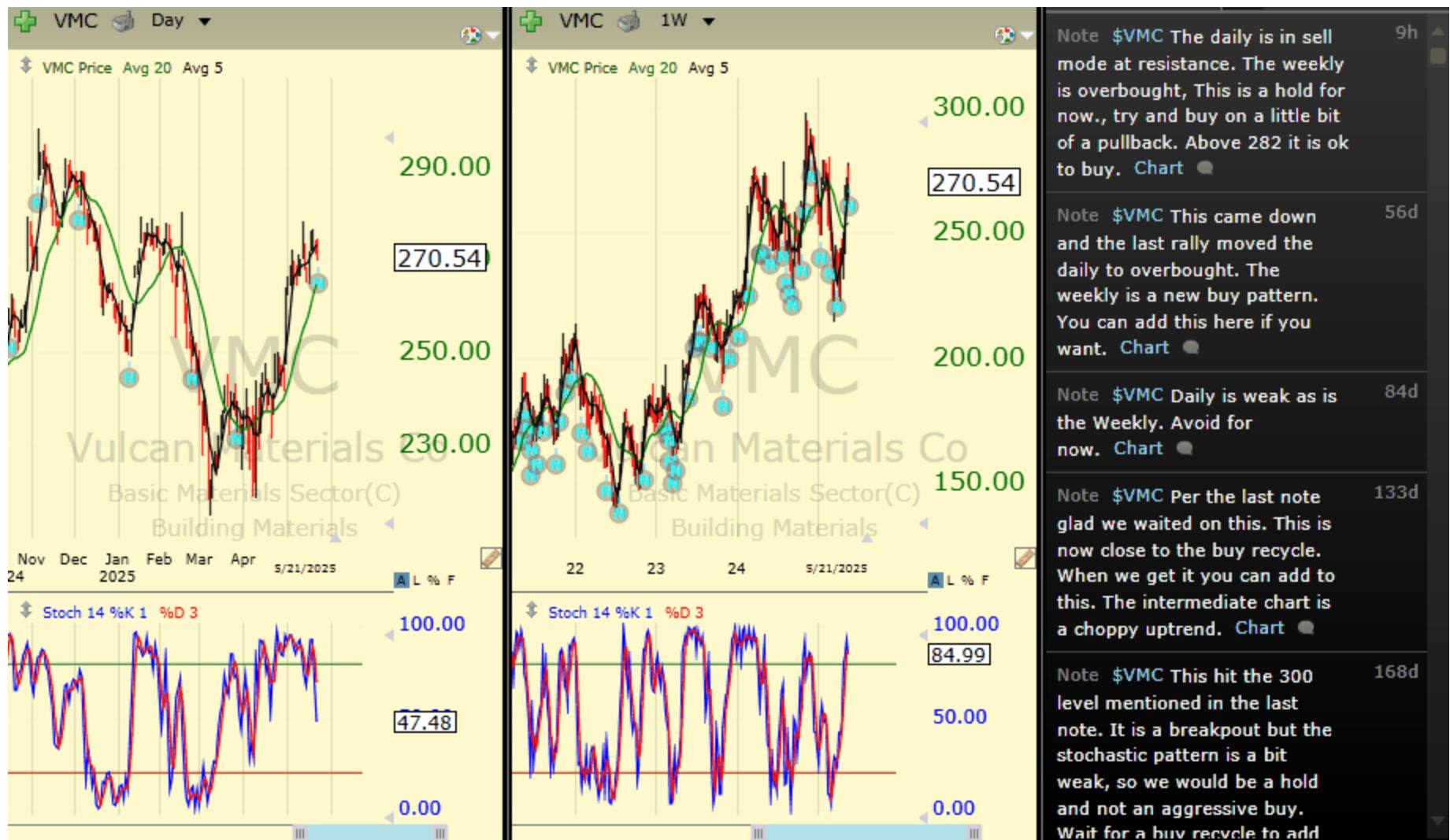
Chartbook: Stocks of Interest

Sym	Company	trkPrice	Sector ▲	Industry
NMR	Nomura Holdings, Inc. ADS	5.96	Financial Services Sector	Capital Markets
COF	Capital One Financial Cp	186.93	Financial Services Sector	Credit Services
PYPL	PayPal Holdings Inc	71.65	Financial Services Sector	Credit Services
ALL	Allstate Corporation	205.31	Financial Services Sector	Insurance - Property & Casualty
ABBV	AbbVie Inc	181.80	Healthcare Sector	Drug Manufacturers - Major
AMGN	Amgen Inc	271.34	Healthcare Sector	Drug Manufacturers - Major
UNH	UnitedHealth Group Inc.	302.98	Healthcare Sector	Health Care Plans
SMLR	Semler Scientific Inc	44.89	Healthcare Sector	Medical Devices
BA	Boeing Co	203.21	Industrials Sector	Aerospace & Defense
HII	Huntington Ingalls Industries	223.38	Industrials Sector	Aerospace & Defense
AGX	Argan, Inc.	193.13	Industrials Sector	Engineering & Construction
PWR	Quanta Services Inc	341.23	Industrials Sector	Engineering & Construction
CAT	Caterpillar Inc	342.51	Industrials Sector	Farm & Heavy Construction Machinery
DE	Deere & Co	514.66	Industrials Sector	Farm & Heavy Construction Machinery
UPS	United Parcel Service Inc	95.85	Industrials Sector	Integrated Shipping & Logistics
CRS	Carpenter Technol Corp	230.29	Industrials Sector	Metal Fabrication
CSCO	Cisco Systems Inc	63.20	Technology Sector	Communication Equipment
ANET	Arista Networks Inc	92.43	Technology Sector	Computer Systems
DELL	Dell Technologies Inc	111.93	Technology Sector	Computer Systems
IONQ	IonQ Inc	33.54	Technology Sector	Computer Systems
QBTS	D-Wave Quantum Inc	15.36	Technology Sector	Computer Systems
RCAT	Red Cat Holdings Inc	6.35	Technology Sector	Computer Systems
RGTI	Rigetti Computing Inc	10.96	Technology Sector	Computer Systems
STX	Seagate Technology Holdings PLC	104.43	Technology Sector	Computer Systems
GLW	Corning Inc	48.18	Technology Sector	Electronic Components
VRT	Vertiv Holdings LLC	103.61	Technology Sector	Electronic Components
FI	Fiserv Inc	162.22	Technology Sector	Information Technology Services
RDDT	Reddit Inc	95.85	Technology Sector	Internet Content & Information
SPOT	Spotify Technology .A	643.00	Technology Sector	Internet Content & Information

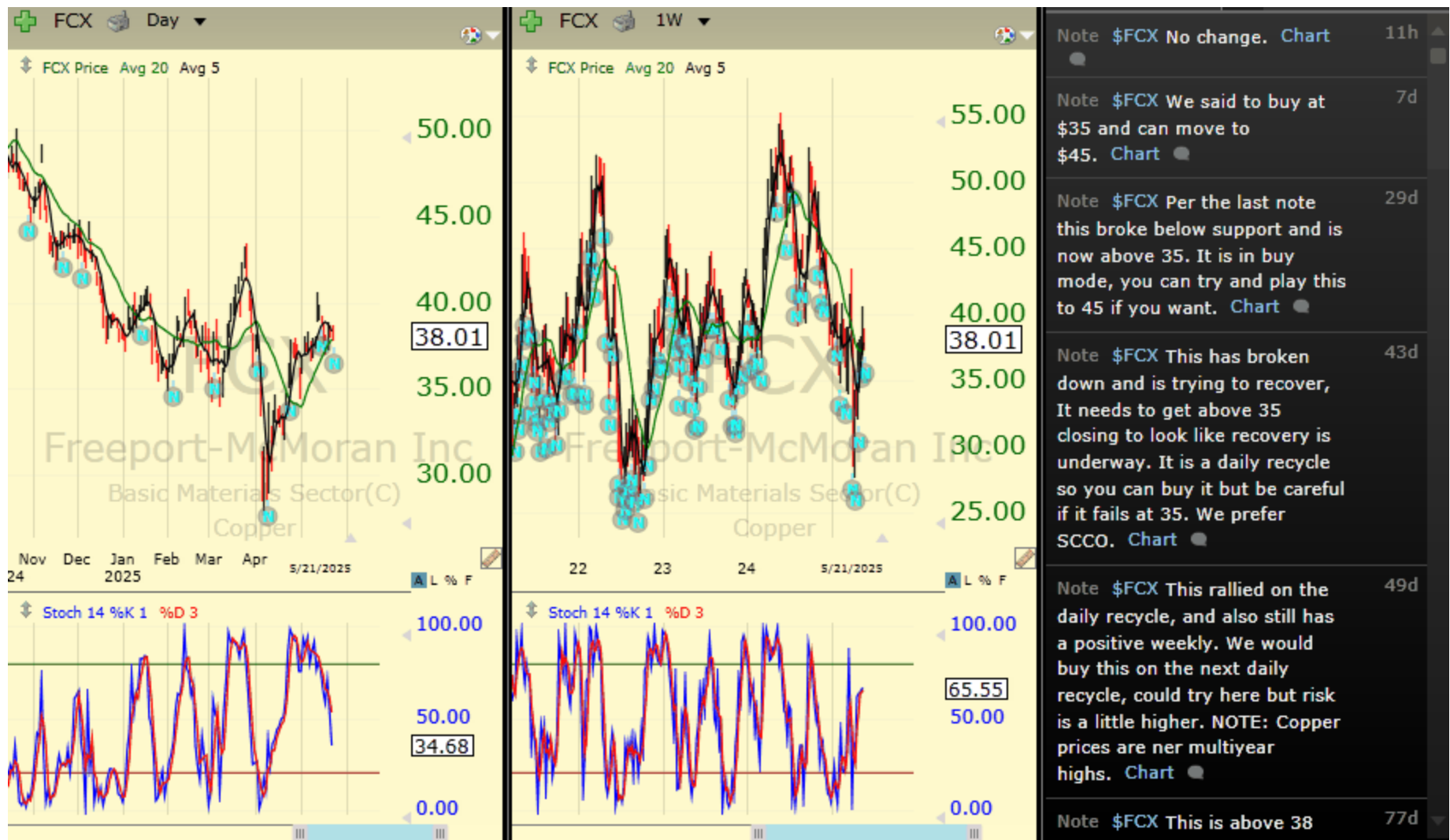
Chartbook: Stocks of Interest

Sym	Company	trkPrice	Sector ▲	Industry
ALAB	Astera Labs Inc	92.17	Technology Sector	Semiconductors
INTU	Intuit Inc	659.98	Technology Sector	Software - Application
MSTR	Microstrategy Inc	402.69	Technology Sector	Software - Application
NICE	NICE Ltd	162.02	Technology Sector	Software - Application
SOUN	SoundHound AI Inc	9.47	Technology Sector	Software - Application
TEAM	Atlassian Corporation	209.17	Technology Sector	Software - Application
UBER	Uber Technologies	88.67	Technology Sector	Software - Application
ADBE	Adobe Systems Inc	414.03	Technology Sector	Software - Infrastructure
CRWV	CoreWeave Inc	107.39	Technology Sector	Software - Infrastructure
MSFT	Microsoft Corp	452.57	Technology Sector	Software - Infrastructure
PANW	Palo Alto Networks, Inc.	181.26	Technology Sector	Software - Infrastructure
PAY	Paymentus Holdings Inc	38.66	Technology Sector	Software - Infrastructure
TOST	Toast Inc	42.84	Technology Sector	Software - Infrastructure
CEG	Constellation Energy Corporation	287.11	Utilities Sector	Utilities - Independent Power Producers
GEV	GE Vernova	453.03	Utilities Sector	Utilities - Independent Power Producers
D	Dominion Energy Inc	56.53	Utilities Sector	Utilities - Regulated Electric
ETR	Entergy Corp	82.57	Utilities Sector	Utilities - Regulated Electric
VG	Venture Global Inc	10.40	Utilities Sector	Utilities - Regulated Gas
ALBKY	Alpha Svcs and Holdings	0.72490		
CRED	Columbia ETF Trust I - Real Estate	21.26		
ETHW	Bitwise Ethereum ETF	18.05		
IMPUV	Impala Platinum Holdings Ltd	7.59000		
MUB	iShares S&P National Municipal Bo	103.68		
NBGIF	National Bank of Greece SA	11.5000		
RSPU	Invesco S&P 500 Equal Weight Uti	71.30		
SHLD	Global X Defense Tech ETF	54.94		
SMH	VanEck Vectors Semiconductor ET	241.47		
XBI	SPDR S&P Biotech ETF	79.33		

Chartbook: Stocks of Interest



Chartbook: Stocks of Interest



Chartbook: Stocks of Interest



Chartbook: Stocks of Interest



Chartbook: Stocks of Interest



Chartbook: Stocks of Interest



Chartbook: Stocks of Interest



Chartbook: Stocks of Interest



Chartbook: Stocks of Interest



Chartbook: Stocks of Interest



Chartbook: Stocks of Interest



Chartbook: Stocks of Interest



Chartbook: Stocks of Interest



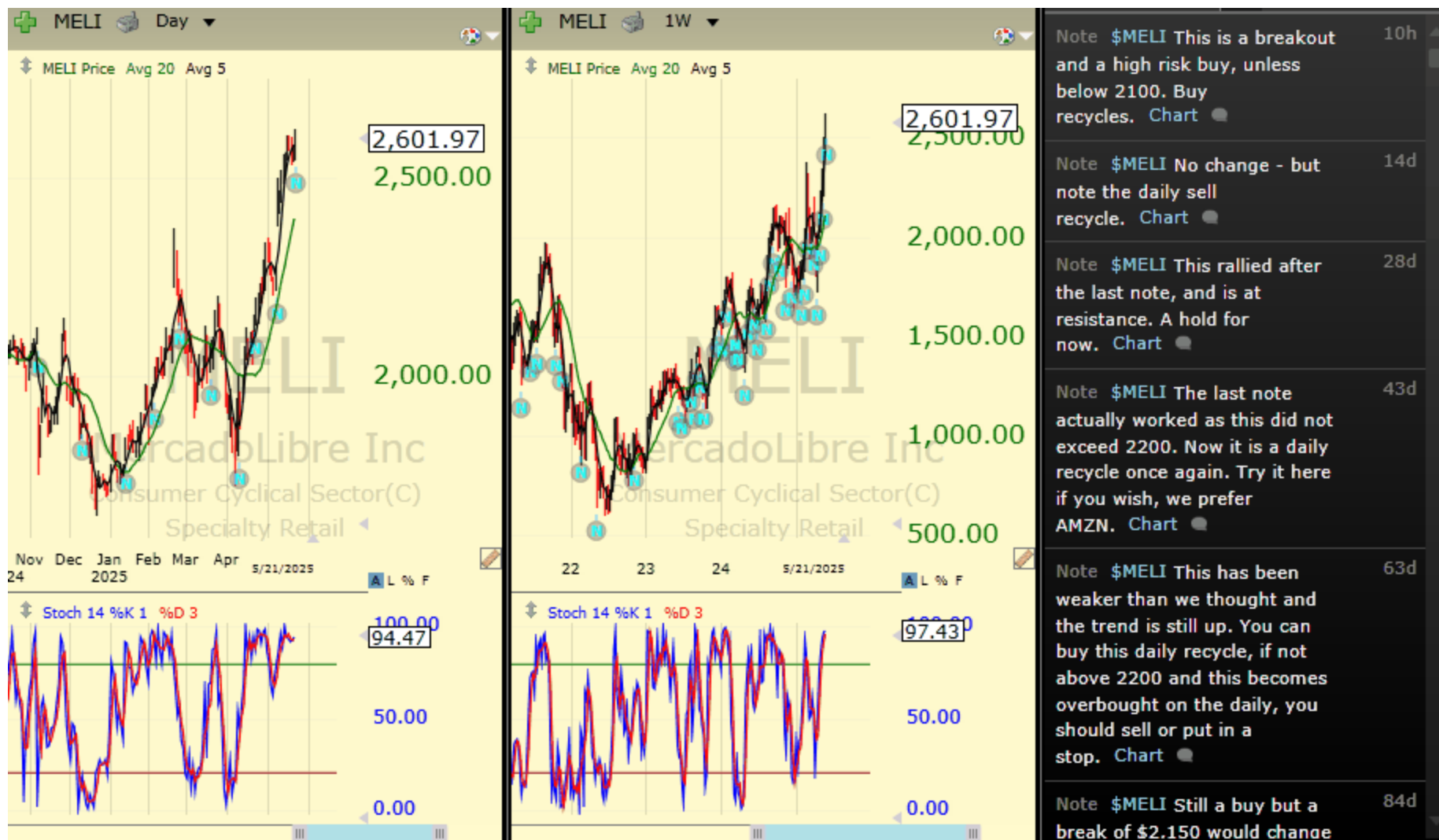
Chartbook: Stocks of Interest



Chartbook: Stocks of Interest



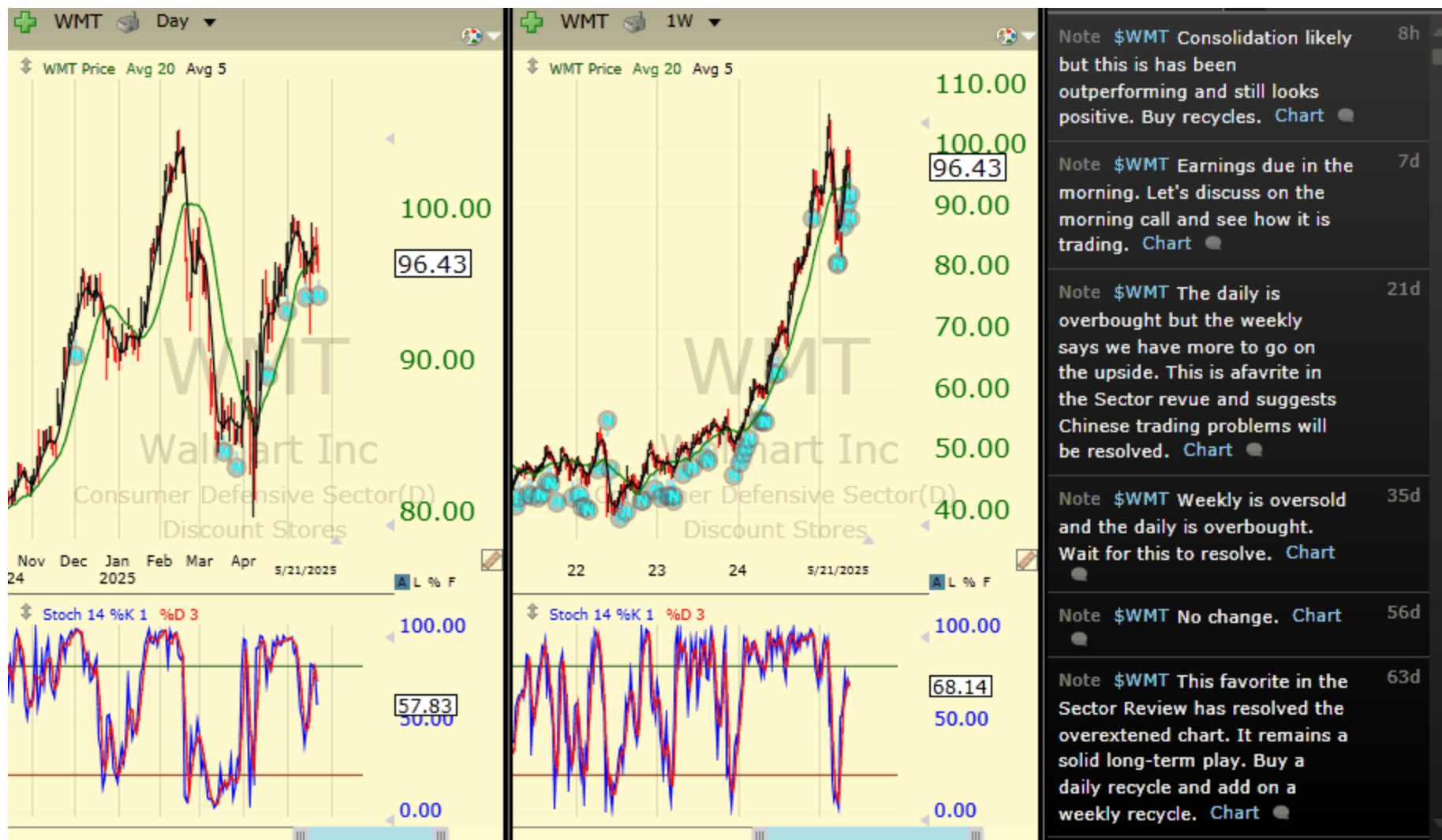
Chartbook: Stocks of Interest



Chartbook: Stocks of Interest



Chartbook: Stocks of Interest



Chartbook: Stocks of Interest



Chartbook: Stocks of Interest



Chartbook: Stocks of Interest



Chartbook: Stocks of Interest



Chartbook: Stocks of Interest



Chartbook: Stocks of Interest



Chartbook: Stocks of Interest



Chartbook: Stocks of Interest



Chartbook: Stocks of Interest



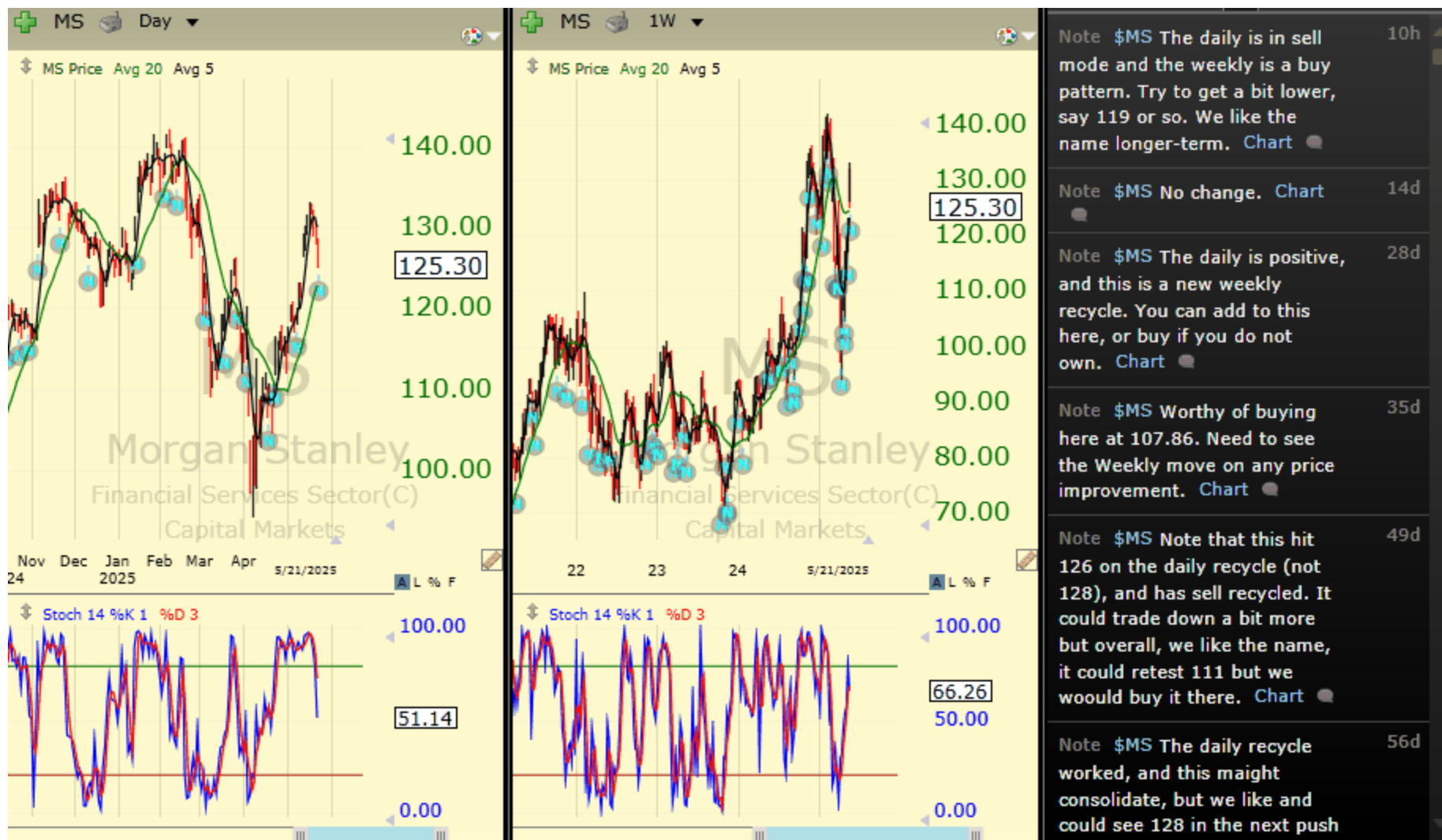
Chartbook: Stocks of Interest



Chartbook: Stocks of Interest



Chartbook: Stocks of Interest



Chartbook: Stocks of Interest



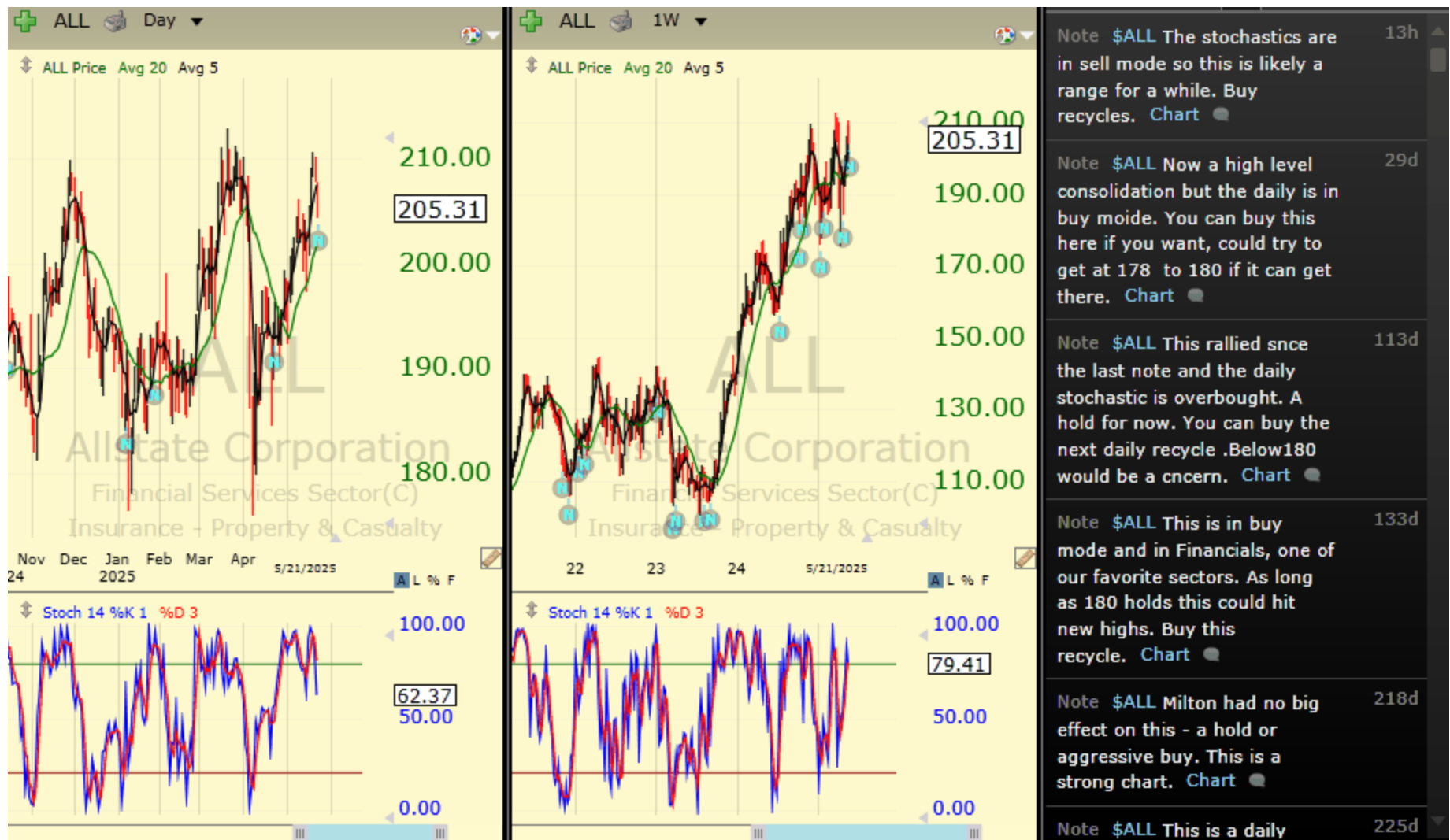
Chartbook: Stocks of Interest



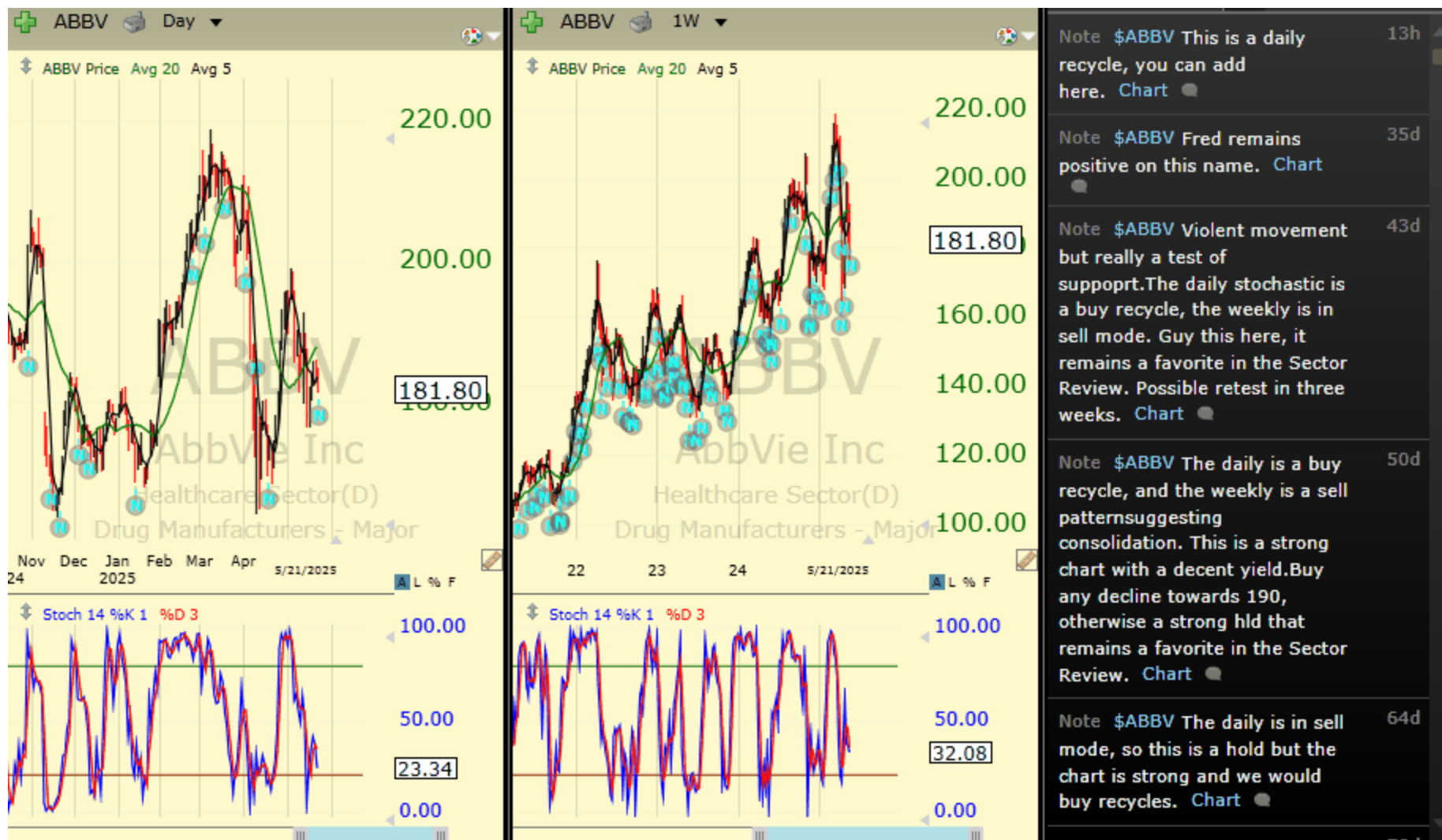
Chartbook: Stocks of Interest



Chartbook: Stocks of Interest



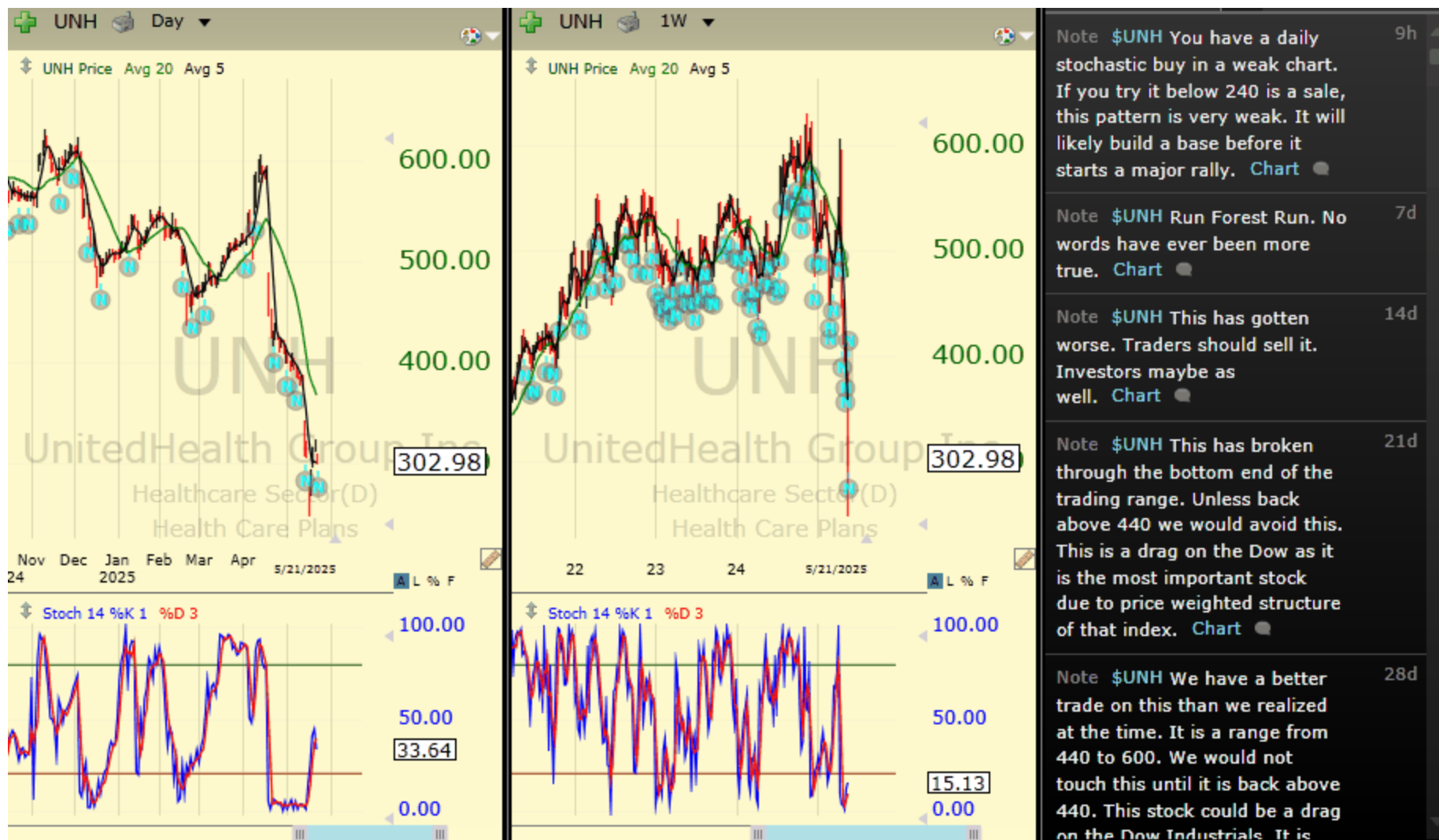
Chartbook: Stocks of Interest



Chartbook: Stocks of Interest



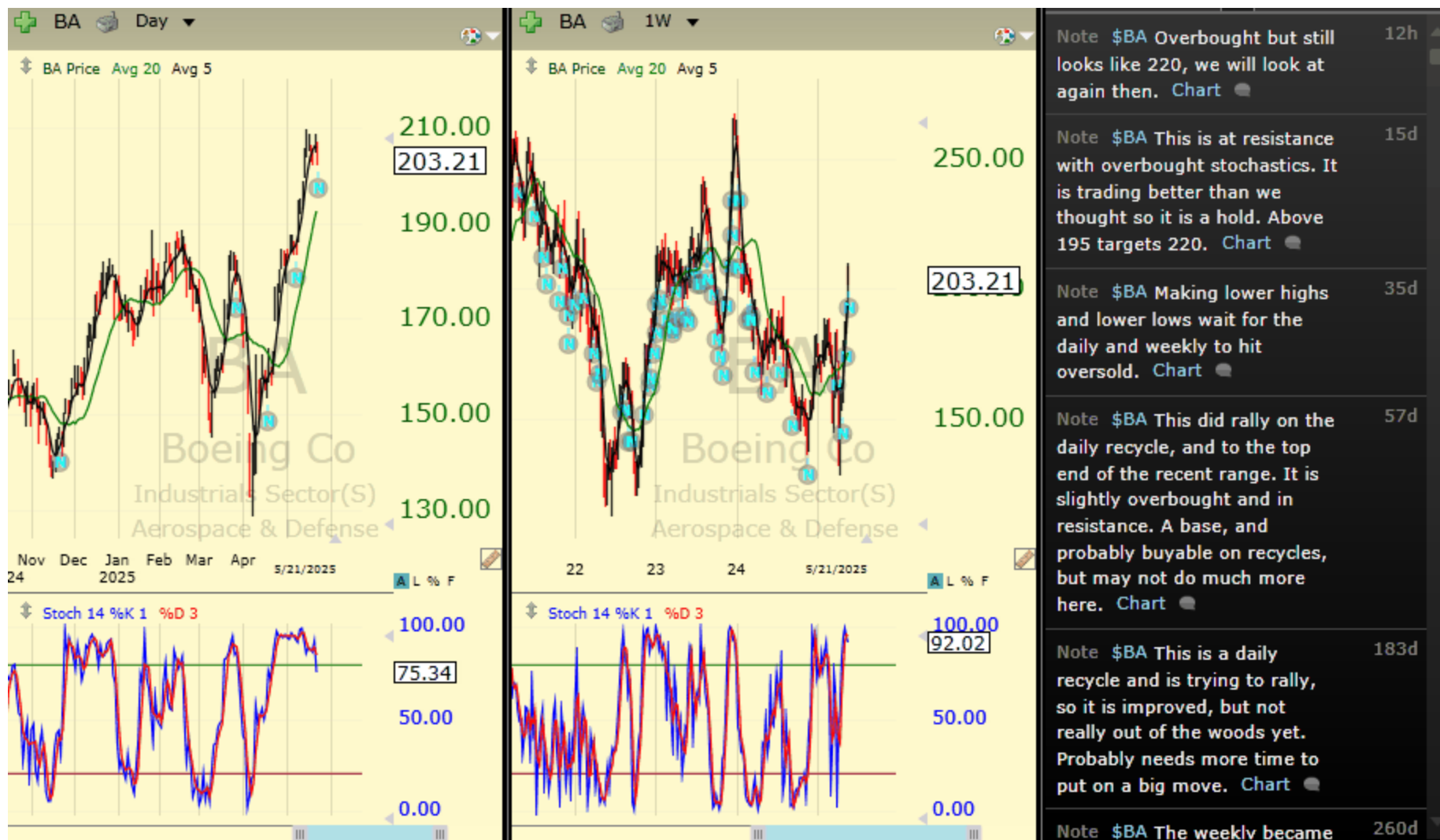
Chartbook: Stocks of Interest



Chartbook: Stocks of Interest



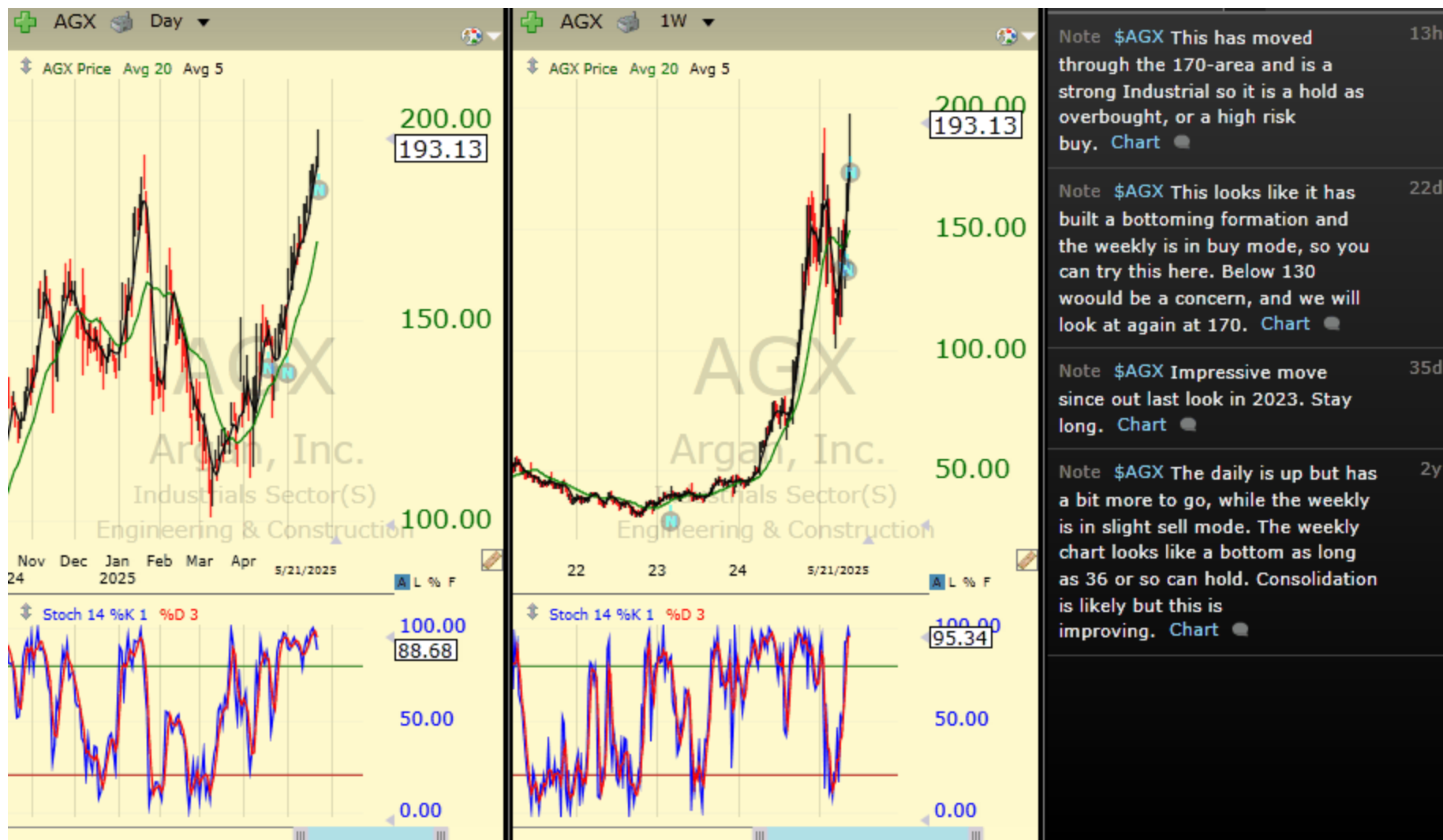
Chartbook: Stocks of Interest



Chartbook: Stocks of Interest



Chartbook: Stocks of Interest



Chartbook: Stocks of Interest



Chartbook: Stocks of Interest



Chartbook: Stocks of Interest



Chartbook: Stocks of Interest



Chartbook: Stocks of Interest



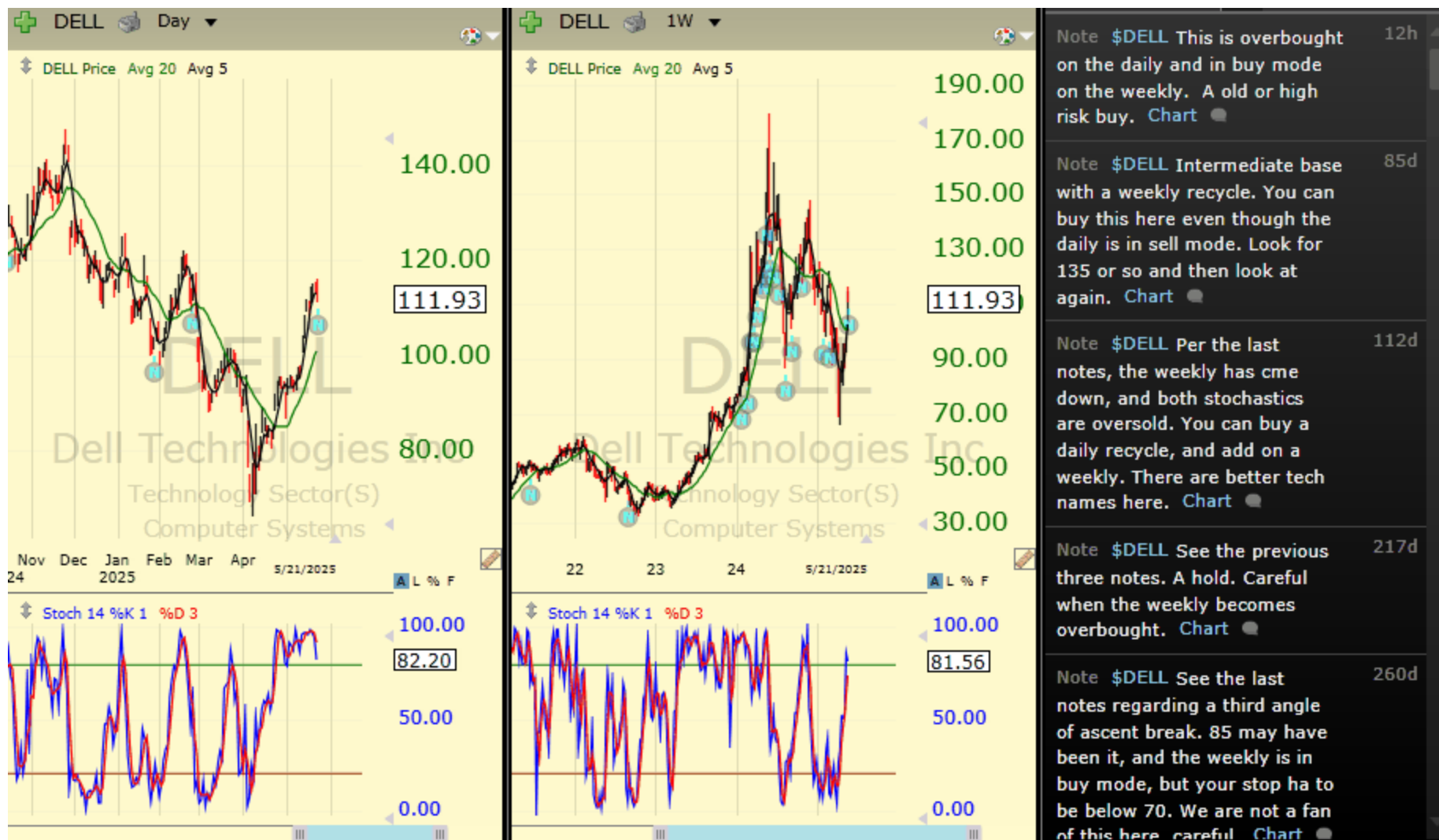
Chartbook: Stocks of Interest



Chartbook: Stocks of Interest



Chartbook: Stocks of Interest



Chartbook: Stocks of Interest



Chartbook: Stocks of Interest



Chartbook: Stocks of Interest



Chartbook: Stocks of Interest



Chartbook: Stocks of Interest



Chartbook: Stocks of Interest



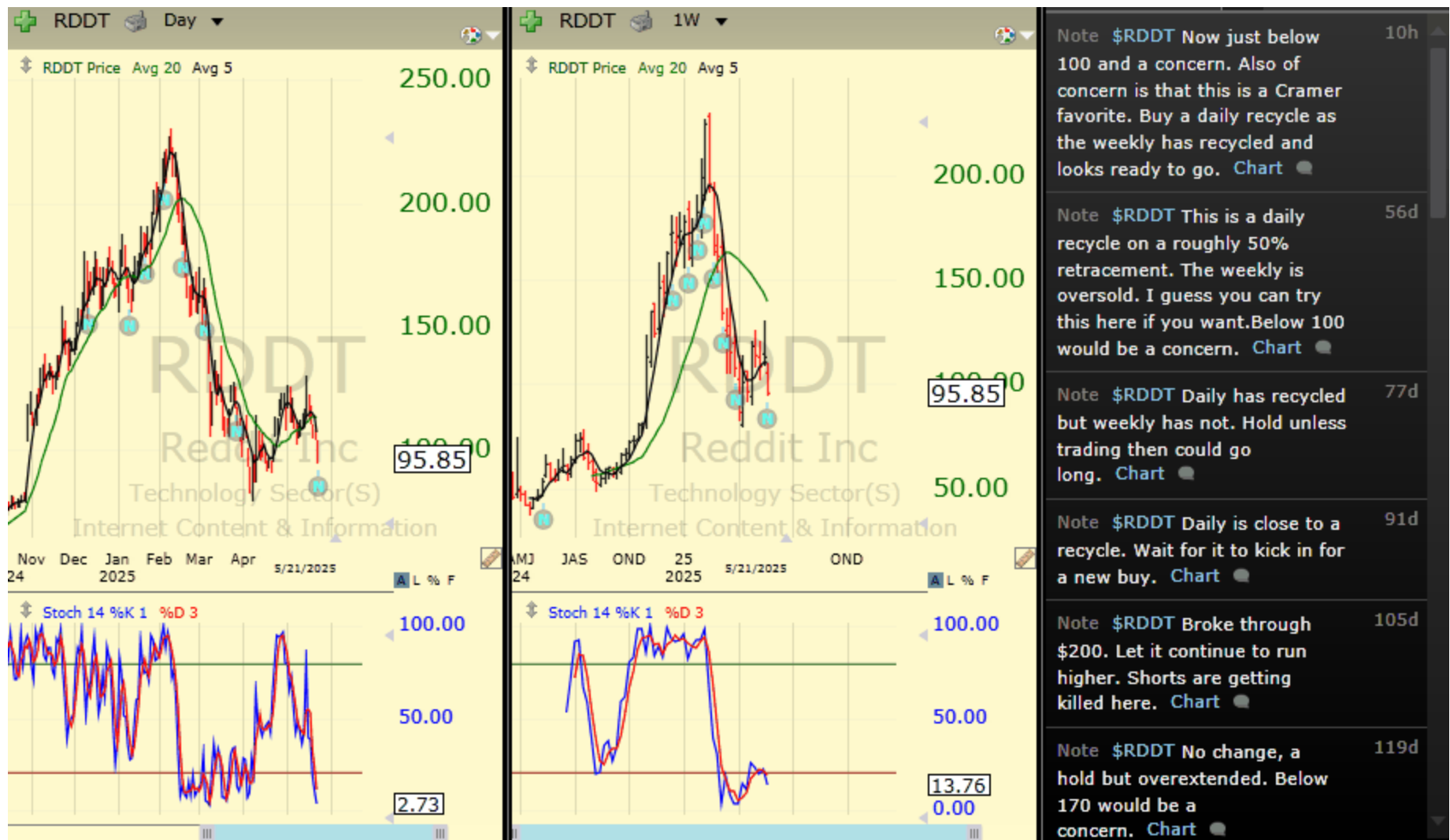
Chartbook: Stocks of Interest



Chartbook: Stocks of Interest



Chartbook: Stocks of Interest



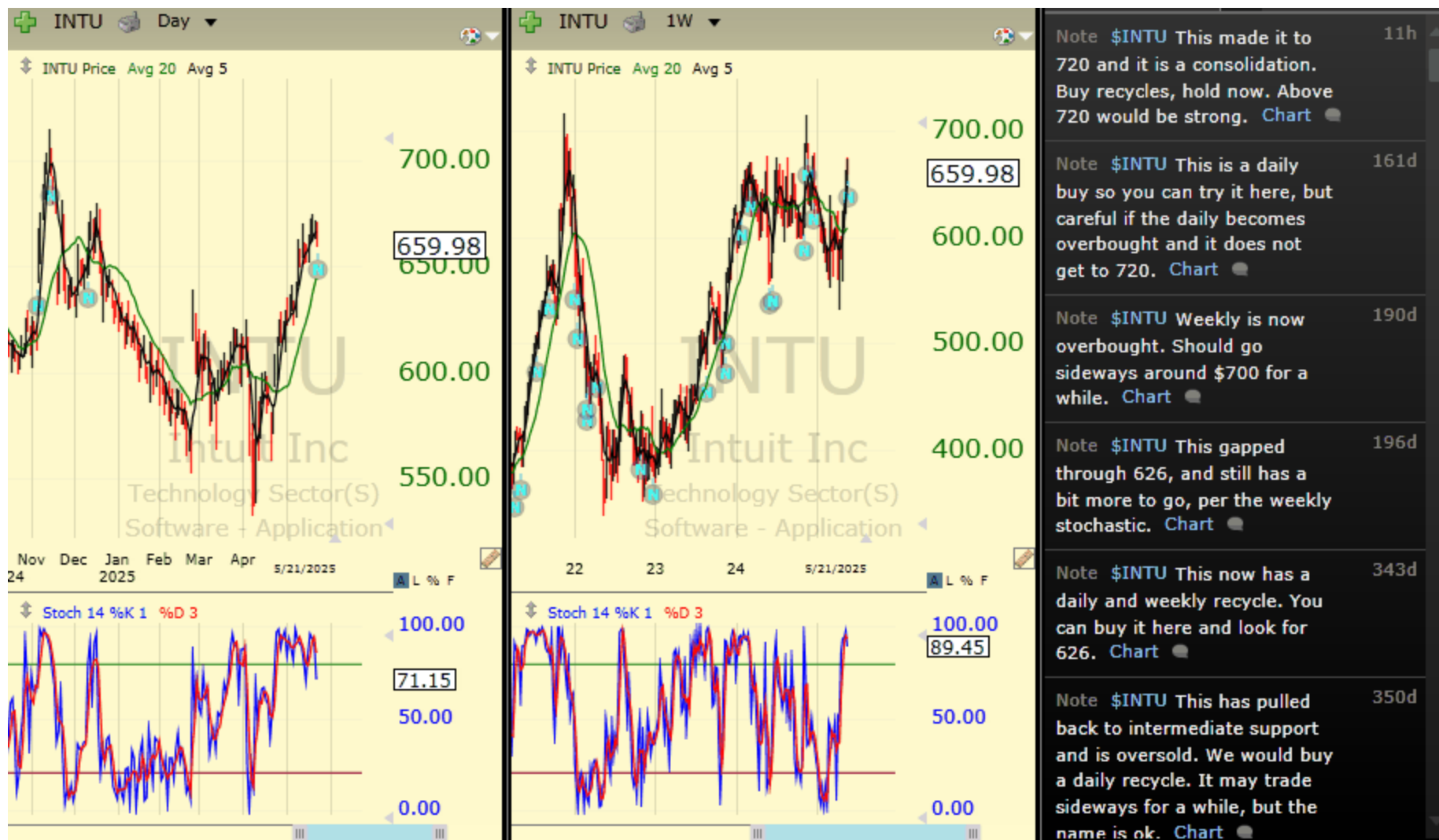
Chartbook: Stocks of Interest



Chartbook: Stocks of Interest



Chartbook: Stocks of Interest



Chartbook: Stocks of Interest



Chartbook: Stocks of Interest



Chartbook: Stocks of Interest



Chartbook: Stocks of Interest



Chartbook: Stocks of Interest



Chartbook: Stocks of Interest



Chartbook: Stocks of Interest



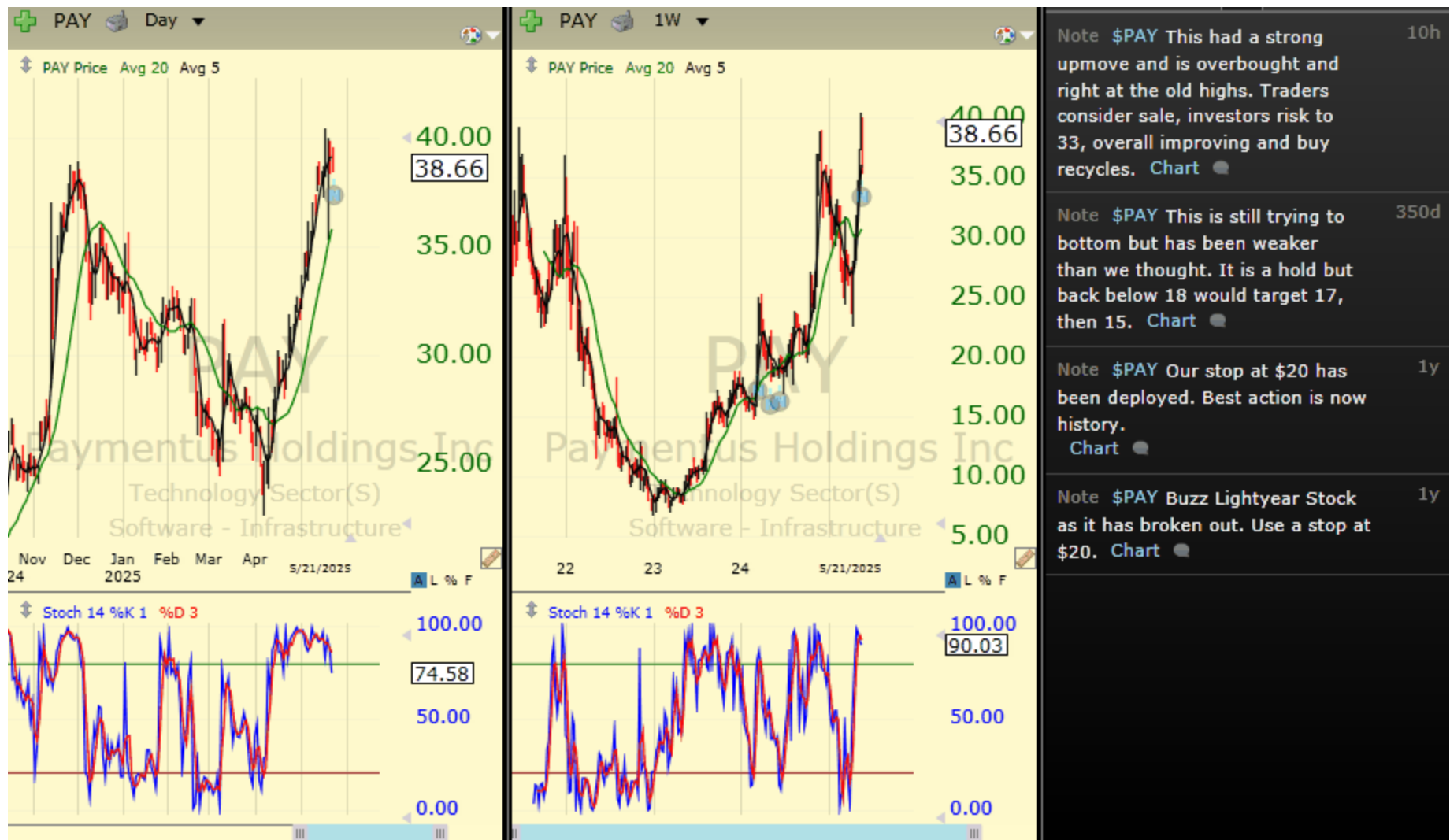
Chartbook: Stocks of Interest



Chartbook: Stocks of Interest



Chartbook: Stocks of Interest



Chartbook: Stocks of Interest



Chartbook: Stocks of Interest



Chartbook: Stocks of Interest



Chartbook: Stocks of Interest



Chartbook: Stocks of Interest



Chartbook: Stocks of Interest



Chartbook: Stocks of Interest



Chartbook: Stocks of Interest



Note \$CRED REITS are still a concern for us and this is new so it does not have "street cred." At resistance so it might pause here while the daily comes down. A hold for now. [Chart](#) 12h

Chartbook: Stocks of Interest



Chartbook: Stocks of Interest



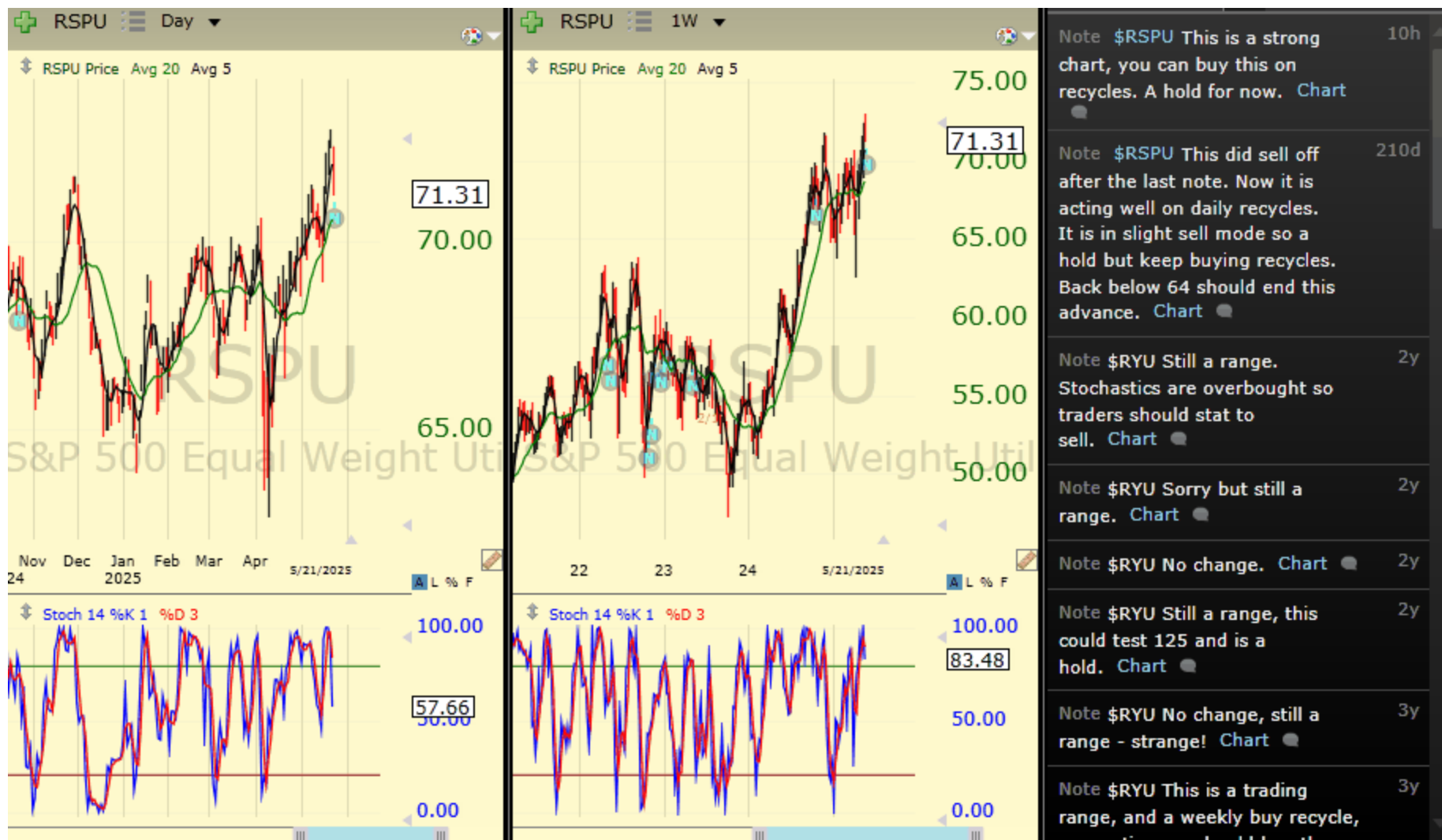
Chartbook: Stocks of Interest



Chartbook: Stocks of Interest



Chartbook: Stocks of Interest



Chartbook: Stocks of Interest



Note \$SHLD This might have something to do with the new missile defence. Strong as long as above 50. Buy recycles. [Chart](#) 10h

Note \$SHLD This ETF looks better than most of the names in this sector. How is that possible? Not sure but for those that are in it, stay. [Chart](#) 7d

Note \$SHLD Very high relative strength but new and overbought. On balance high risk buy as long as above 49. [Chart](#) 14d

Chartbook: Stocks of Interest



Chartbook: Stocks of Interest



The FRED Report

Financial Research, Education & Data

The FRED Report (www.theFREDreport.com) was started to provide Financial Advisors and investors access to unbiased market research. The President of The Fred Report, **Fred Meissner, CMT** has been practicing Technical Market Analysis since 1983 and has worked in the research departments of Merrill Lynch and Robinson – Humphrey /Smith Barney. In addition he has served the public as a portfolio manager and financial advisor. We know the problems investors face and have devoted our career to helping find the best possible investments in all environments.

