

Chartbook Review

(charts as of 05/07/2025)

Most Requested Names:

ASTS, HOOD, LLY, NMR, PLTR, QCOM, TSLA

The FRED Report

4514 Chamblee-Dunwoody
Dunwoody, GA 30338

Web:

www.theFREDreport.com

Phone: 404-875-FRED

fred@thefredreport.com

By Fred Meissner, CMT

www.theFREDreport.com

Chartbook: Stocks of Interest

Sym	Company	trkPrice	Sector ▲	Industry
MOS	The Mosaic Company	31.54	Basic Materials Sector	Agricultural Inputs
TREX	Trex Co Inc	56.49	Basic Materials Sector	Building Materials
RIO	Rio Tinto Plc Adr	60.03	Basic Materials Sector	Industrial Metals & Minerals
TMUS	T-Mobile US Inc.	251.26	Communication Services Sector	Telecom Services
QNST	QuinStreet Incorporated	18.28	Consumer Cyclical Sector	Advertising Agencies
PVH	Phillips-Van Heusen Corp	71.30	Consumer Cyclical Sector	Apparel Manufacturing
CVNA	Carvana Co	258.75	Consumer Cyclical Sector	Auto & Truck Dealerships
RIVN	Rivian Automotive Inc	12.71	Consumer Cyclical Sector	Auto Manufacturers
TSLA	Tesla Inc	276.22	Consumer Cyclical Sector	Auto Manufacturers
CCL	Carnival Corp	19.68	Consumer Cyclical Sector	Leisure
DIS	The Walt Disney Company	102.02	Consumer Cyclical Sector	Media - Diversified
WYNN	Wynn Resorts Ltd	84.06	Consumer Cyclical Sector	Resorts & Casinos
DPZ	Dominos Pizza Inc	476.48	Consumer Cyclical Sector	Restaurants
MCD	McDonalds Corp	318.01	Consumer Cyclical Sector	Restaurants
SBUX	Starbucks Corporation	82.71	Consumer Cyclical Sector	Restaurants
AMZN	Amazon.Com Inc	188.71	Consumer Cyclical Sector	Specialty Retail
CPNG	Coupage Inc	26.58	Consumer Cyclical Sector	Specialty Retail
MELI	MercadoLibre Inc	2270.44	Consumer Cyclical Sector	Specialty Retail
PEP	Pepsico Inc	131.92	Consumer Defensive Sector	Beverages - Soft Drinks
CALM	Cal-Maine Foods Inc	95.50	Consumer Defensive Sector	Farm Products
ELF	e l f Beauty Inc	66.63	Consumer Defensive Sector	Household & Personal Products
HIMS	Hims & Hers Health, Inc	52.35	Consumer Defensive Sector	Household & Personal Products
UL	Unilever Plc	64.12	Consumer Defensive Sector	Household & Personal Products
BRBR	BellRing Brands Inc	62.72	Consumer Defensive Sector	Packaged Foods
GIS	General Mills Inc	54.43	Consumer Defensive Sector	Packaged Foods
BTI	British Amer Tob Plc	44.44	Consumer Defensive Sector	Tobacco
COP	ConocoPhillips	87.67	Energy Sector	Oil & Gas E&P
SHEL	Shell PLC	65.05	Energy Sector	Oil & Gas Integrated
PAGP	Plains GP Holdings LP	18.01	Energy Sector	Oil & Gas Midstream

Chartbook: Stocks of Interest

Sym	Company	trkPrice	Sector ▲	Industry
OWL	Blue Owl Capital Inc	18.08	Financial Services Sector	Asset Management
JPM	JPMorgan Chase and Co	249.34	Financial Services Sector	Banks - Global
MUFG	Mitsubishi UFJ Financial Group, In	12.26	Financial Services Sector	Banks - Global
HOOD	Robinhood Markets Inc Class A	49.98	Financial Services Sector	Capital Markets
MRX	Marex Group plc	47.99	Financial Services Sector	Capital Markets
MS	Morgan Stanley	119.09	Financial Services Sector	Capital Markets
NMR	Nomura Holdings, Inc. ADS	5.51	Financial Services Sector	Capital Markets
RJF	Raymond James Financial	143.04	Financial Services Sector	Capital Markets
COIN	Coinbase Global Inc	196.56	Financial Services Sector	Financial Data & Stock Exchanges
HIG	The Hartford Insurance Group Inc	127.77	Financial Services Sector	Insurance - Diversified
CNO	Cno Financial Group Inc	37.71	Financial Services Sector	Insurance - Life
AURA	Aura Biosciences Inc	4.97	Healthcare Sector	Biotechnology
BBIO	BridgeBio Pharma Inc	35.79	Healthcare Sector	Biotechnology
HALO	Halozyne Therapeutics Inc	70.13	Healthcare Sector	Biotechnology
NVO	Novo Nordisk A/S	67.52	Healthcare Sector	Biotechnology
DGX	Quest Diagnostics Inc	176.52	Healthcare Sector	Diagnostics & Research
GRAL	GRAIL Inc	34.72	Healthcare Sector	Diagnostics & Research
TMO	Thermo Fisher Scientific Inc	407.85	Healthcare Sector	Diagnostics & Research
AZN	Astrazeneca Plc	70.07	Healthcare Sector	Drug Manufacturers - Major
GILD	Gilead Sciences Inc	98.90	Healthcare Sector	Drug Manufacturers - Major
GSK	GSK plc	37.16	Healthcare Sector	Drug Manufacturers - Major
LLY	Eli Lilly & Company	776.78	Healthcare Sector	Drug Manufacturers - Major
MRK	Merck & Co	79.09	Healthcare Sector	Drug Manufacturers - Major
HROW	Harrow Inc	24.59	Healthcare Sector	Drug Manufacturers - Specialty & Generic
ZTS	Zoetis Inc.	155.96	Healthcare Sector	Drug Manufacturers - Specialty & Generic
UNH	UnitedHealth Group Inc.	390.98	Healthcare Sector	Health Care Plans
DXCM	DexCom Inc	83.37	Healthcare Sector	Medical Devices
SYK	Stryker Corp	383.76	Healthcare Sector	Medical Devices

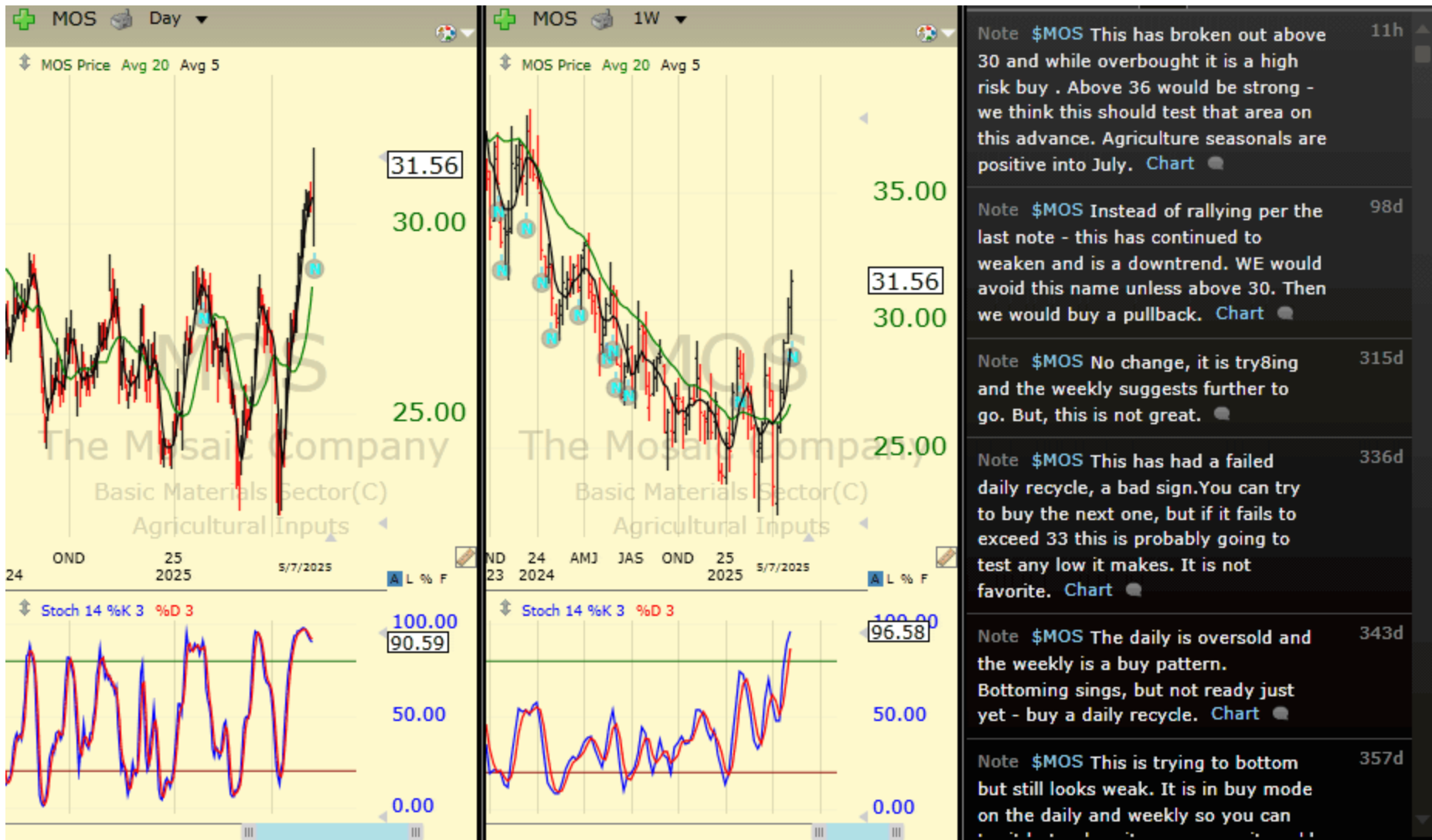
Chartbook: Stocks of Interest

Sym	Company	trkPrice	Sector ▲	Industry
AVAV	Aerovironment Inc	160.01	Industrials Sector	Aerospace & Defense
BA	Boeing Co	185.51	Industrials Sector	Aerospace & Defense
DRS	Leonardo DRS Inc	41.54	Industrials Sector	Aerospace & Defense
RKLB	Rocket Lab USA Inc	22.29	Industrials Sector	Aerospace & Defense
TDG	TransDigm Group Inc	1383.01	Industrials Sector	Aerospace & Defense
DAL	Delta Air Lines Inc	45.30	Industrials Sector	Airlines
MWA	Mueller Water Products Inc	23.64	Industrials Sector	Diversified Industrials
NDSN	Nordson Corp	189.29	Industrials Sector	Diversified Industrials
FAST	Fastenal Company	78.50	Industrials Sector	Industrial Distribution
FTAI	FTAI Aviation Ltd	110.05	Industrials Sector	Rental & Leasing Services
LECO	Lincoln Electric Hldgs	181.55	Industrials Sector	Tools & Accessories
DRH	Diamondrock Hospitality Co	7.40	Real Estate Sector	REIT - Hotel & Motel
HST	Host Hotels & Resorts Inc	14.59	Real Estate Sector	REIT - Hotel & Motel
SHO	Sunstone Hotel Investors Inc	8.17	Real Estate Sector	REIT - Hotel & Motel
ASTS	AST SpaceMobile Inc	25.32	Technology Sector	Communication Equipment
CSCO	Cisco Systems Inc	59.55	Technology Sector	Communication Equipment
ANET	Arista Networks Inc	86.42	Technology Sector	Computer Systems
STX	Seagate Technology Holdings PLC	95.45	Technology Sector	Computer Systems
AAPL	Apple Inc	196.22	Technology Sector	Consumer Electronics
BE	Bloom Energy Corporation	16.52	Technology Sector	Electronic Components
EA	Electronic Arts Inc	155.50	Technology Sector	Electronic Gaming & Multimedia
FIS	Fidelity National Information Servi	75.51	Technology Sector	Information Technology Services
IBM	International Business Machines C	253.24	Technology Sector	Information Technology Services
GOOGL	Alphabet Inc Class A	151.31	Technology Sector	Internet Content & Information
BMI	Badger Meter Inc	225.61	Technology Sector	Scientific & Technical Instruments
ASML	Asml Hldgs Nv Ny Reg Shs	700.39	Technology Sector	Semiconductor Equipment & Materials
ALAB	Astera Labs Inc	71.07	Technology Sector	Semiconductors
AMD	Advanced Micro Devices	100.38	Technology Sector	Semiconductors
NVDA	NVIDIA Corporation	117.03	Technology Sector	Semiconductors
QCOM	Qualcomm Inc	144.32	Technology Sector	Semiconductors

Chartbook: Stocks of Interest

Sym	Company	trkPrice	Sector ▲	Industry
APP	Applovin Corp	303.46	Technology Sector	Software - Application
DUOL	Duolingo Inc	495.56	Technology Sector	Software - Application
MSTR	Microstrategy Inc	392.48	Technology Sector	Software - Application
NOW	ServiceNow, Inc	982.13	Technology Sector	Software - Application
SNOW	Snowflake Inc	170.51	Technology Sector	Software - Application
UBER	Uber Technologies	83.64	Technology Sector	Software - Application
MSFT	Microsoft Corp	433.35	Technology Sector	Software - Infrastructure
PLTR	Palantir Technologies Inc	110.48	Technology Sector	Software - Infrastructure
AEP	American Electric Power	107.48	Utilities Sector	Utilities - Regulated Electric
ETR	Entergy Corp	84.22	Utilities Sector	Utilities - Regulated Electric
FE	Firstenergy Corp	42.92	Utilities Sector	Utilities - Regulated Electric
HQH	abrdn Healthcare Investors	15.42		
IGV	iShares S&P GSTI Software Index	98.78		
IVPAF	Ivanhoe Mines Ltd A	9.3600		
SHLD	Global X Defense Tech ETF	53.03		
XBI	SPDR S&P Biotech ETF	77.35		

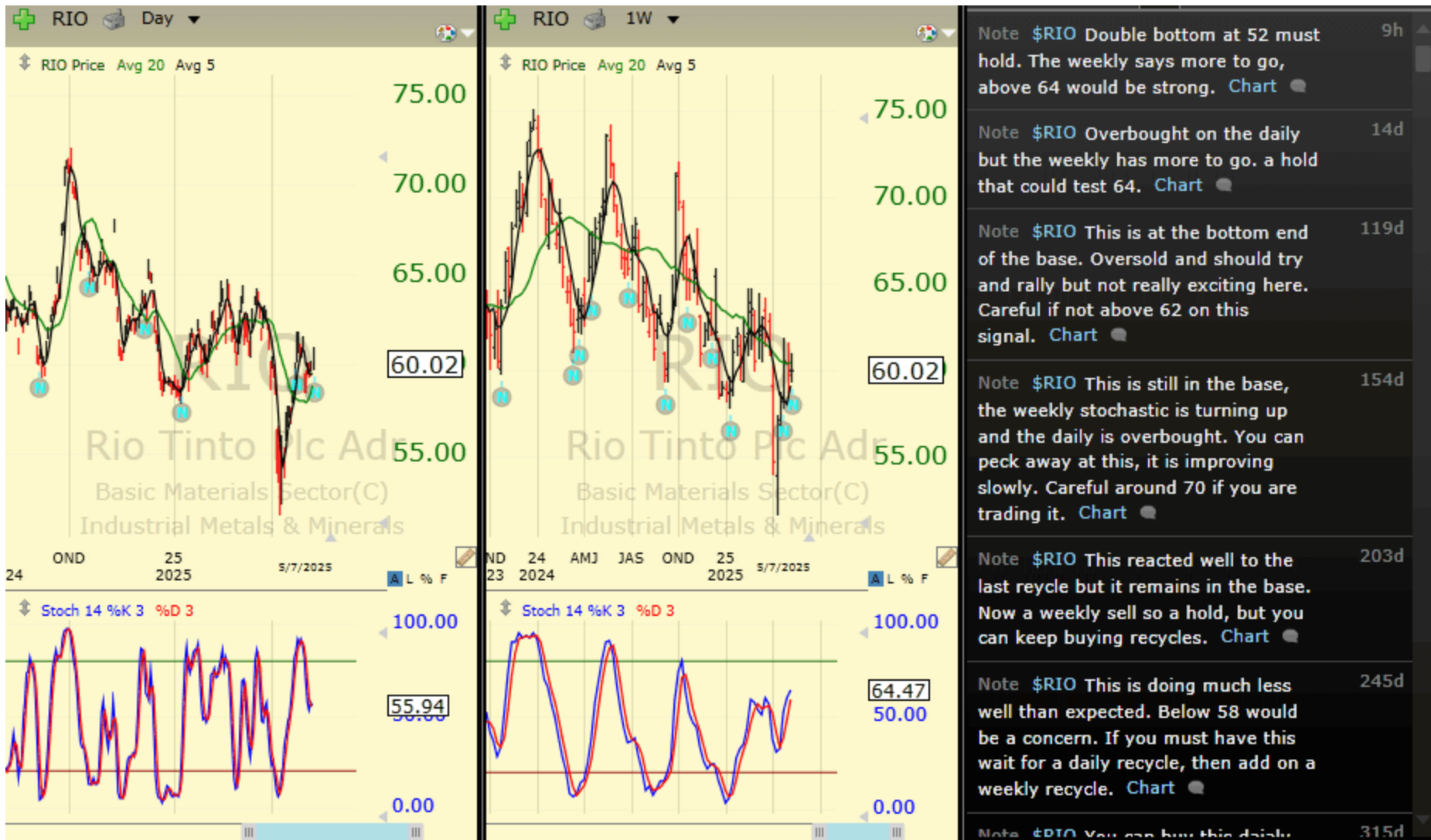
Chartbook: Stocks of Interest



Chartbook: Stocks of Interest



Chartbook: Stocks of Interest



Chartbook: Stocks of Interest



Chartbook: Stocks of Interest



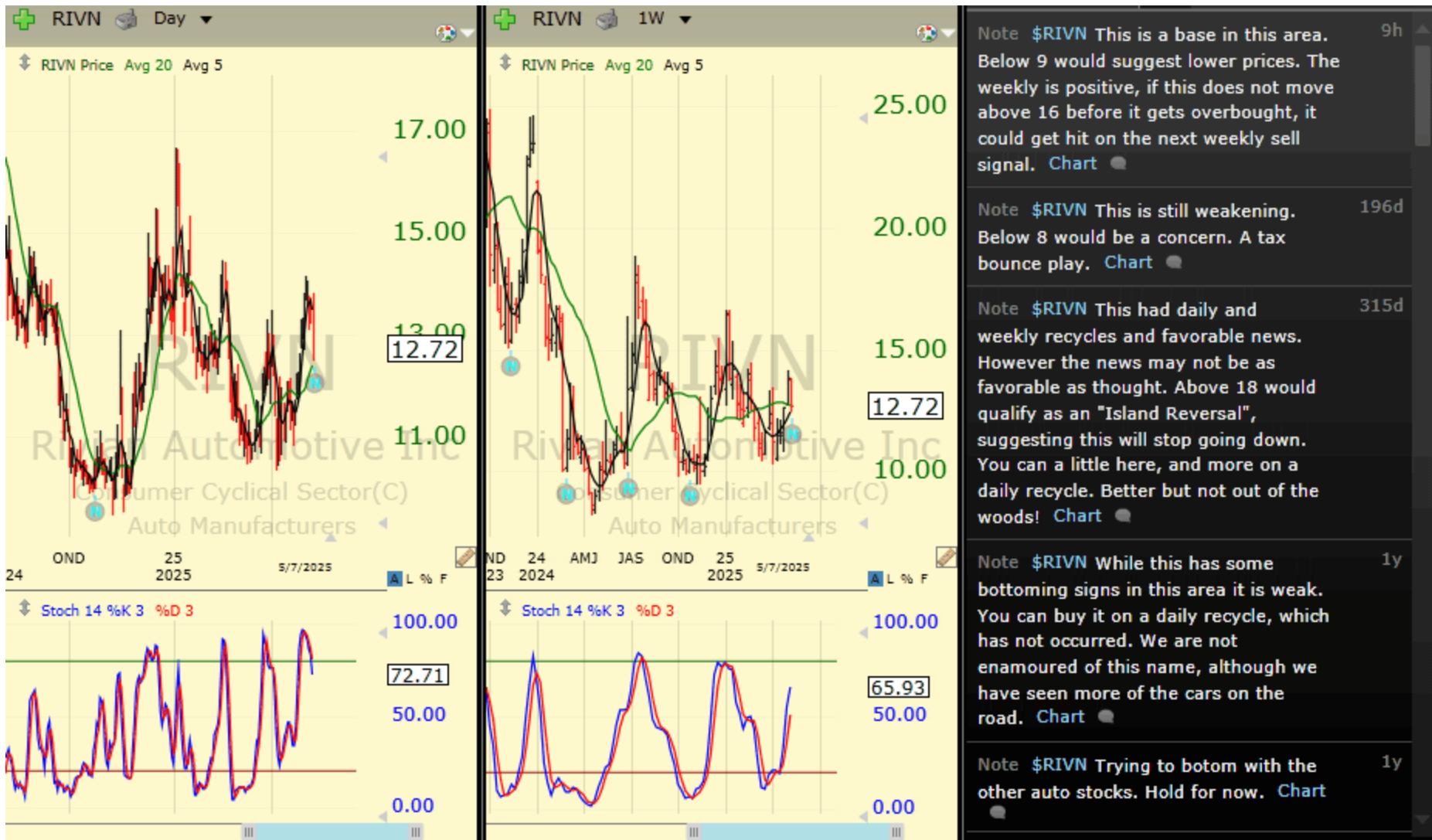
Chartbook: Stocks of Interest



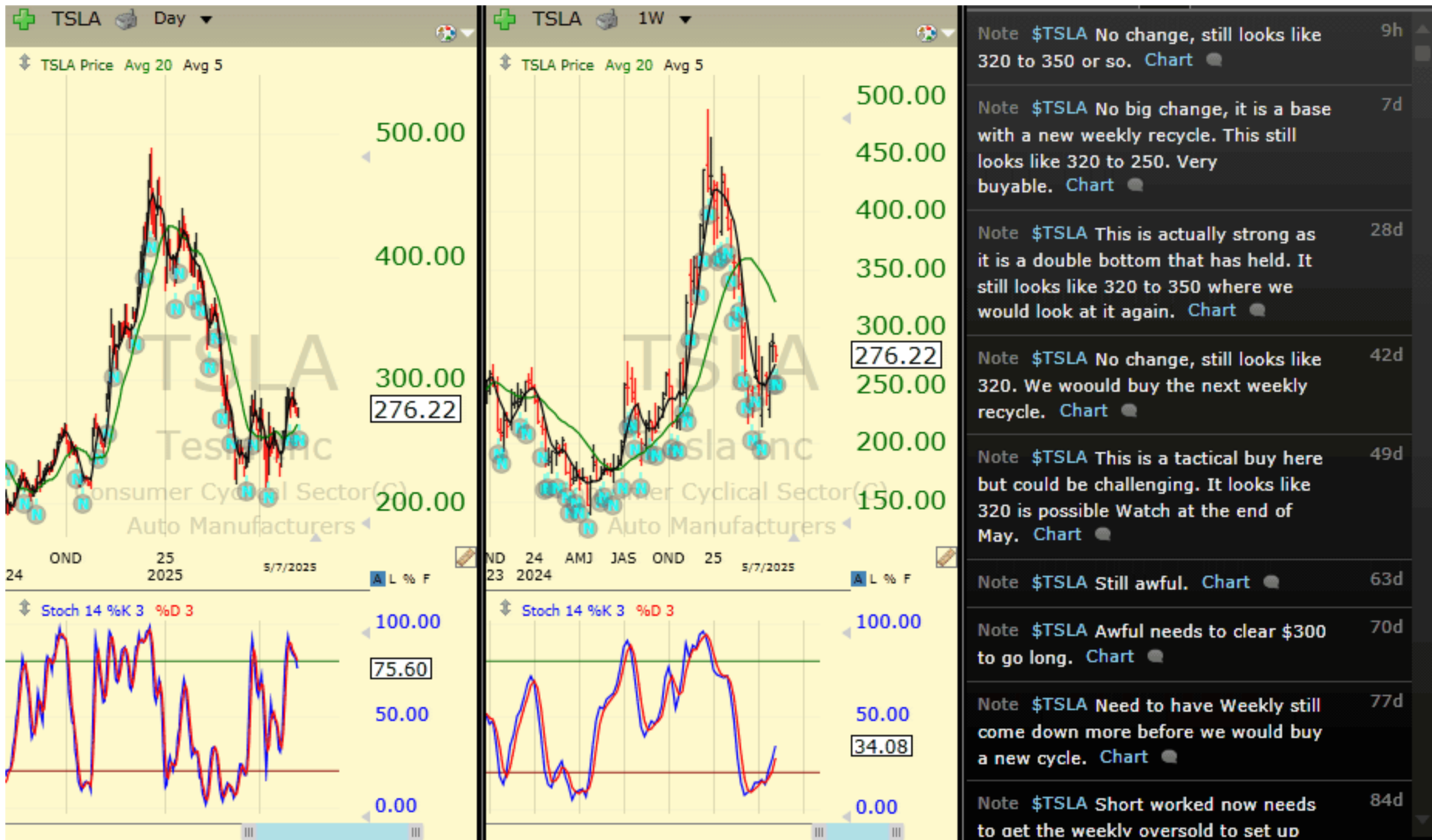
Chartbook: Stocks of Interest



Chartbook: Stocks of Interest



Chartbook: Stocks of Interest



Chartbook: Stocks of Interest



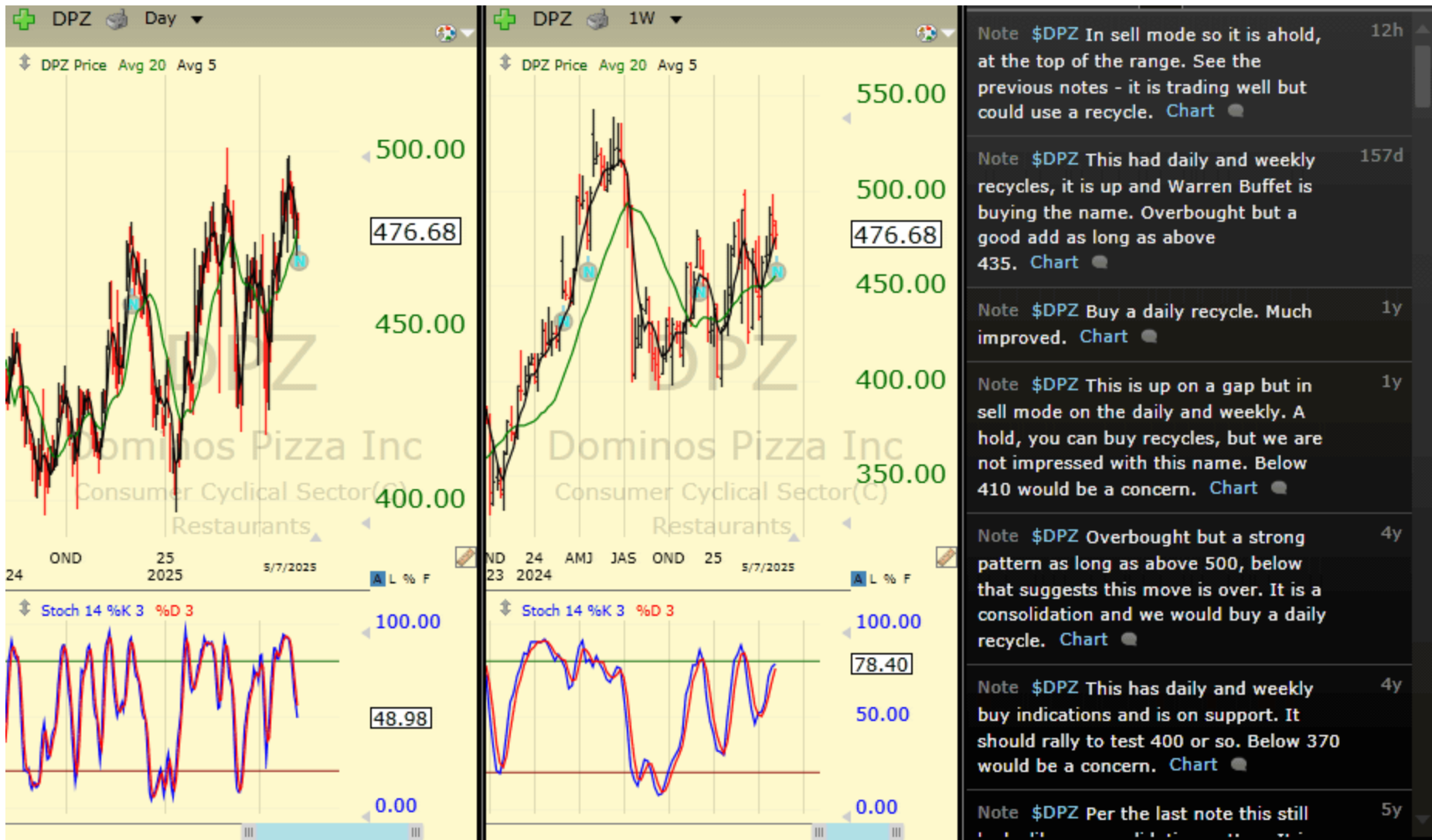
Chartbook: Stocks of Interest



Chartbook: Stocks of Interest



Chartbook: Stocks of Interest



Chartbook: Stocks of Interest



Chartbook: Stocks of Interest



Chartbook: Stocks of Interest



Chartbook: Stocks of Interest



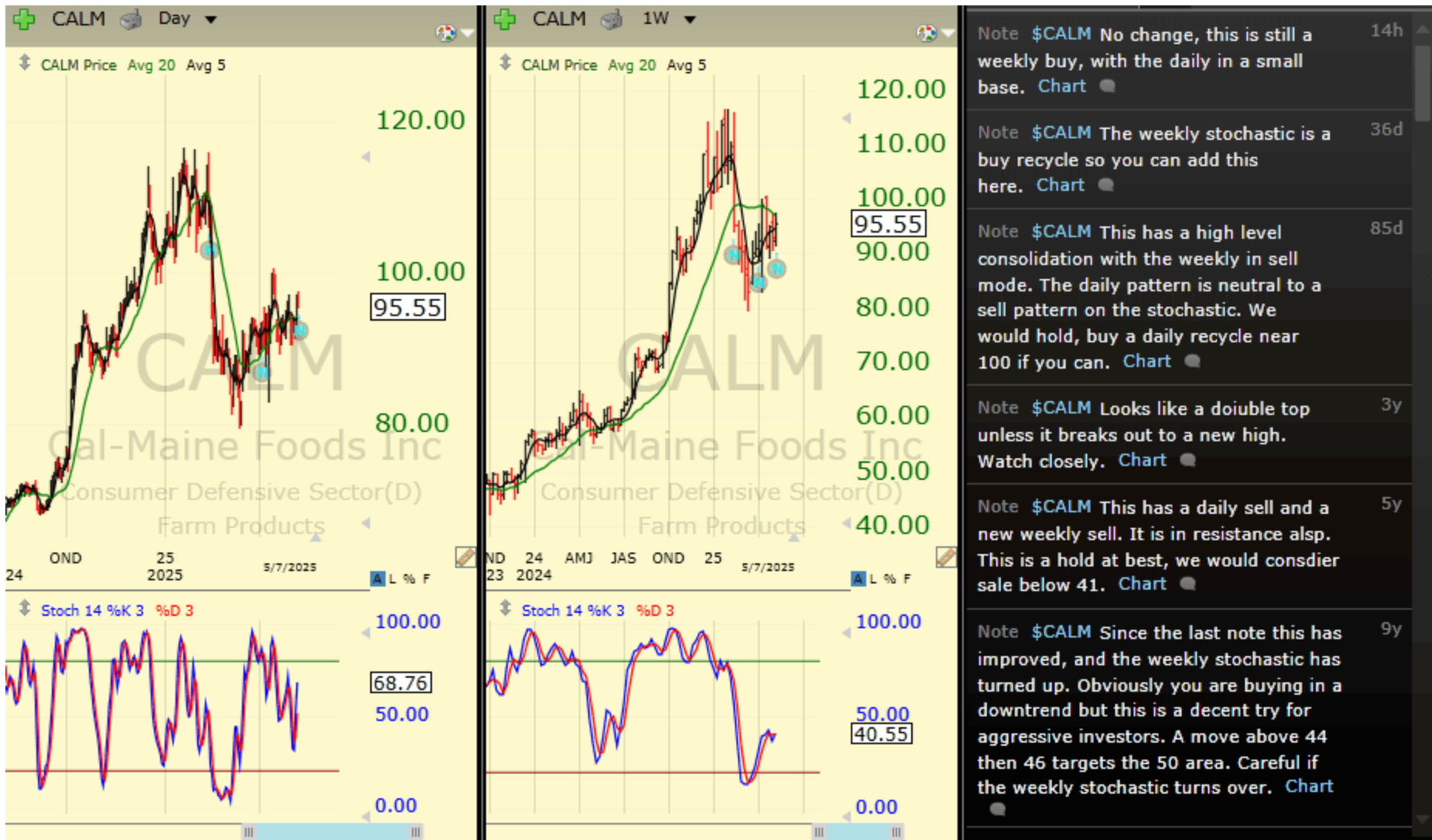
Chartbook: Stocks of Interest



Chartbook: Stocks of Interest



Chartbook: Stocks of Interest



Chartbook: Stocks of Interest



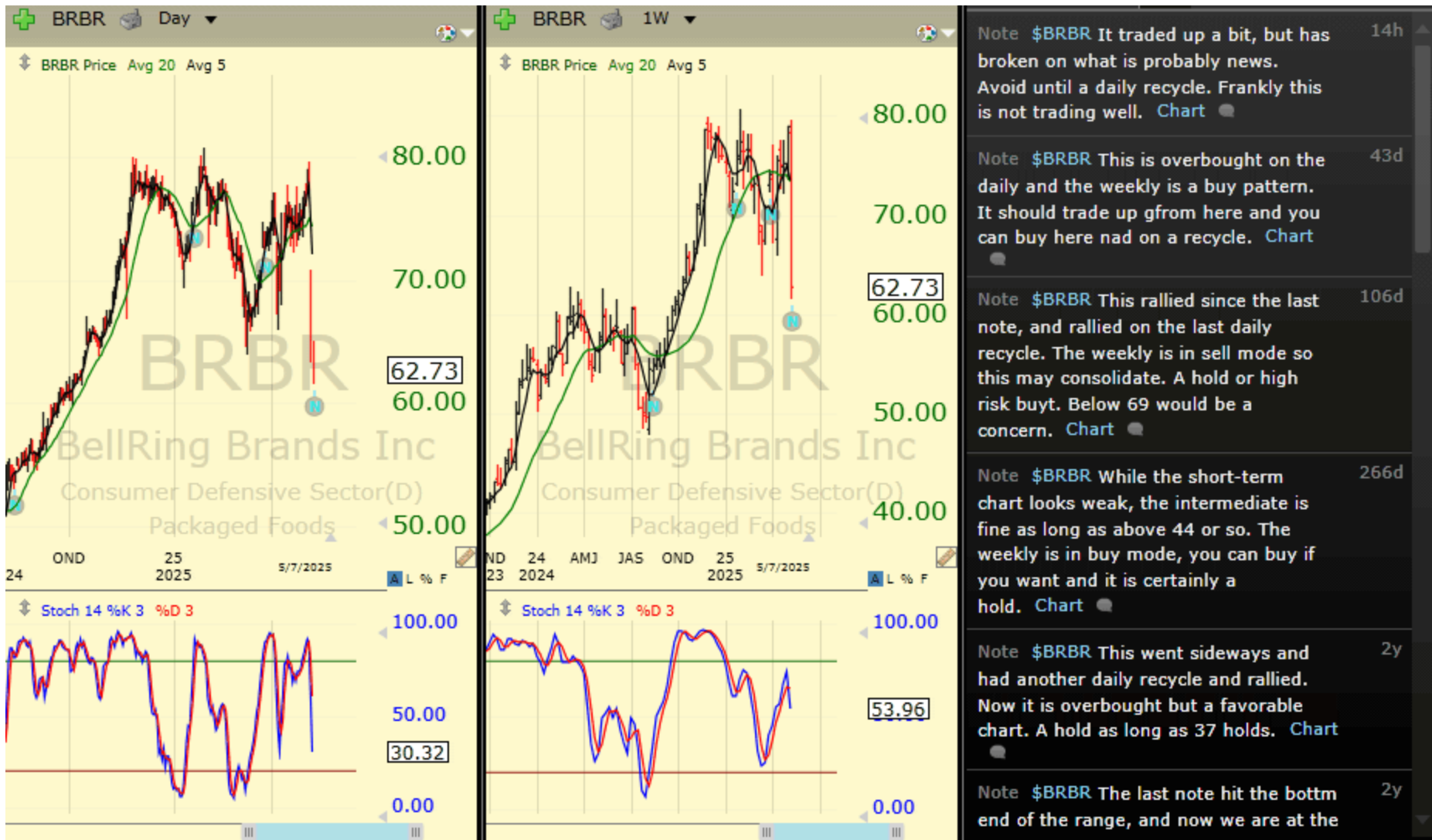
Chartbook: Stocks of Interest



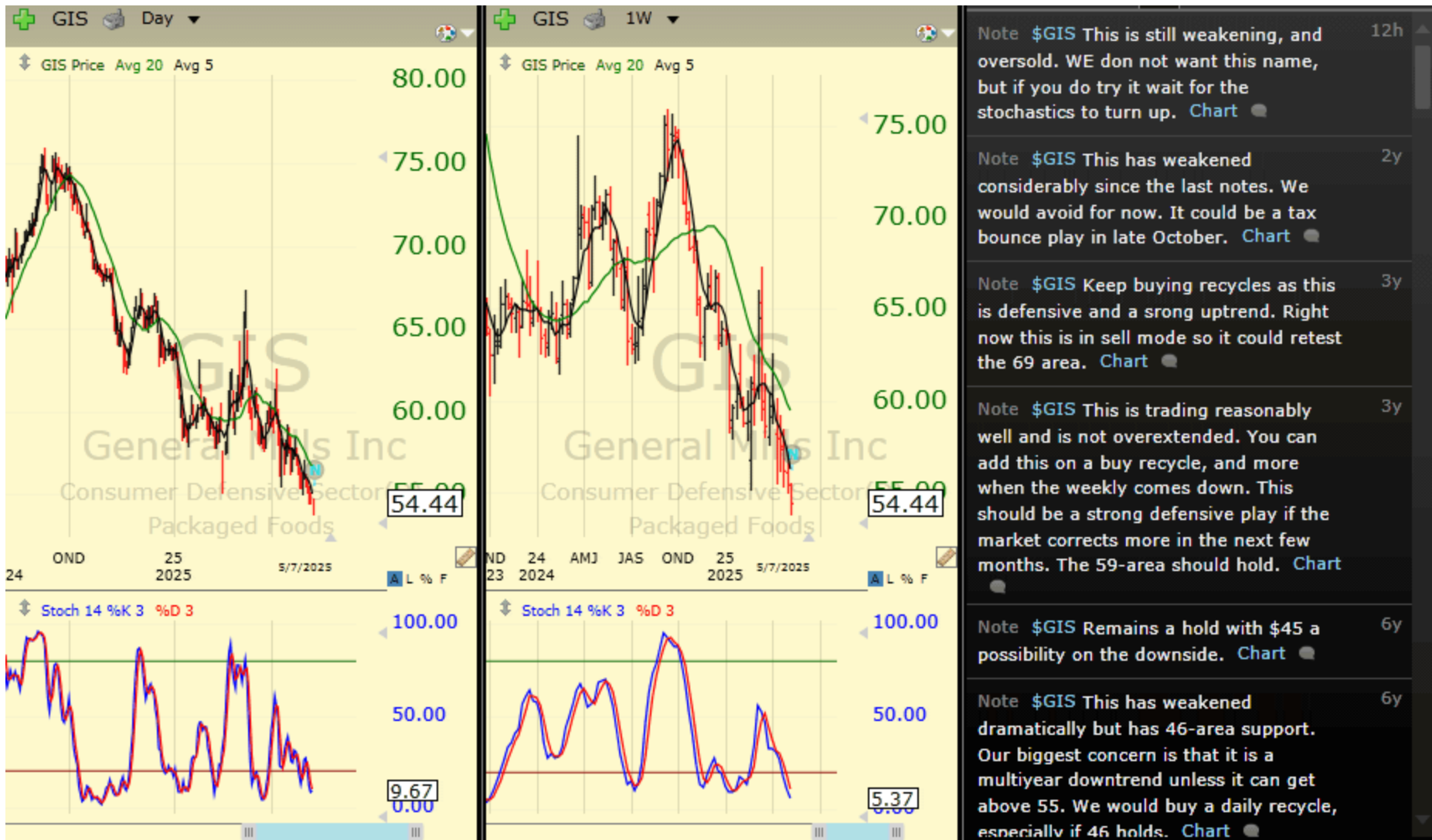
Chartbook: Stocks of Interest



Chartbook: Stocks of Interest



Chartbook: Stocks of Interest



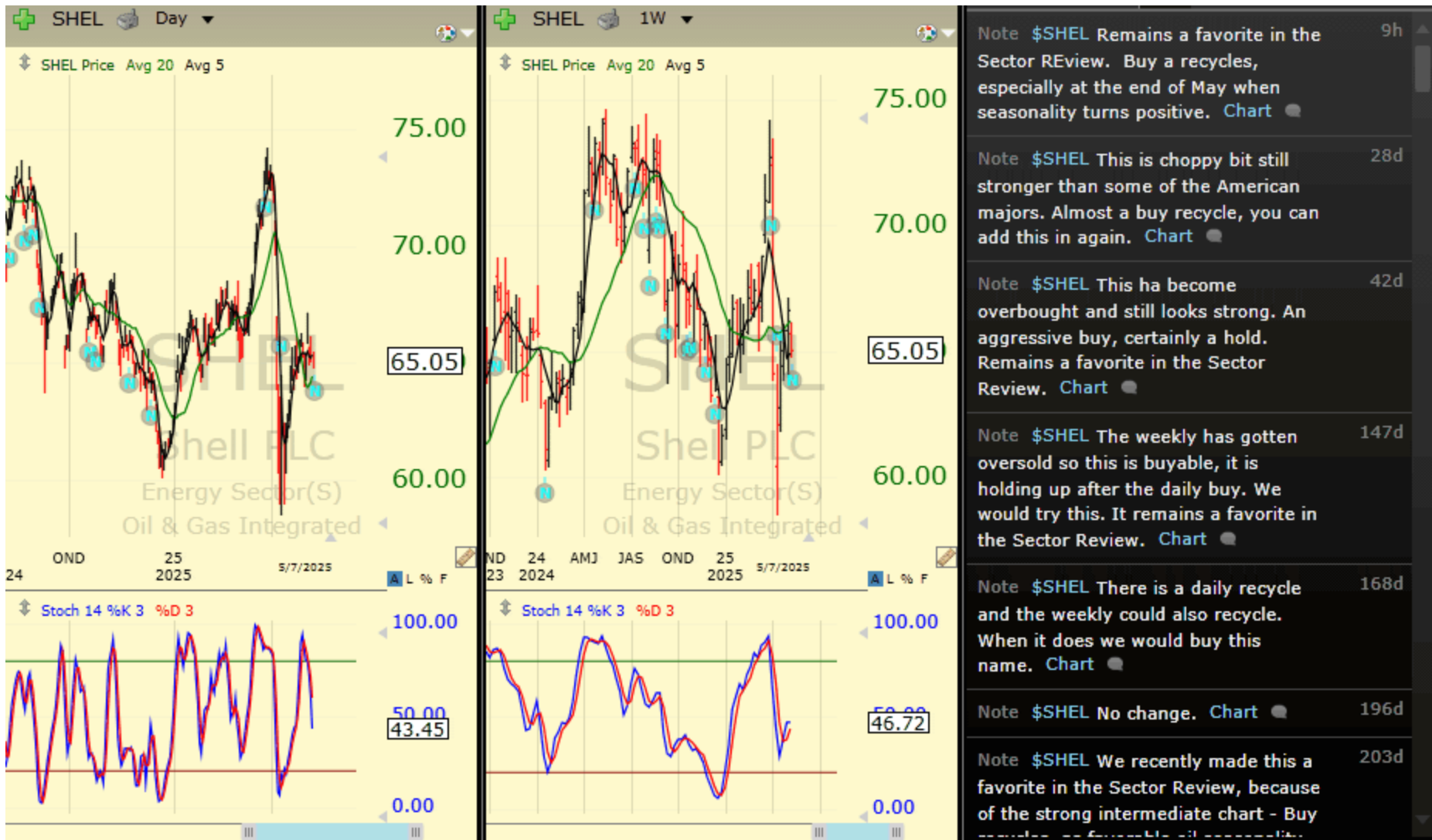
Chartbook: Stocks of Interest



Chartbook: Stocks of Interest



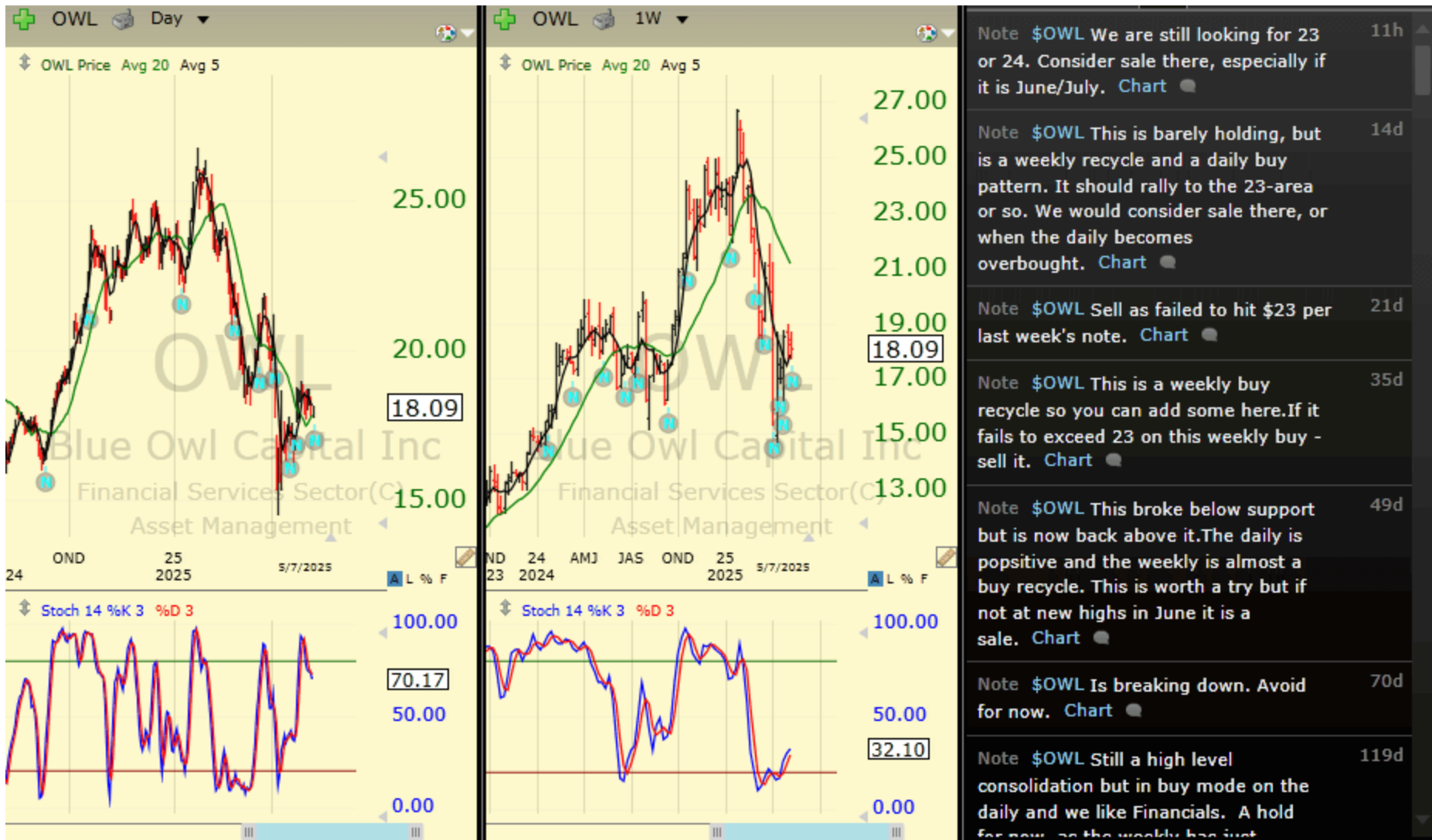
Chartbook: Stocks of Interest



Chartbook: Stocks of Interest



Chartbook: Stocks of Interest



Chartbook: Stocks of Interest



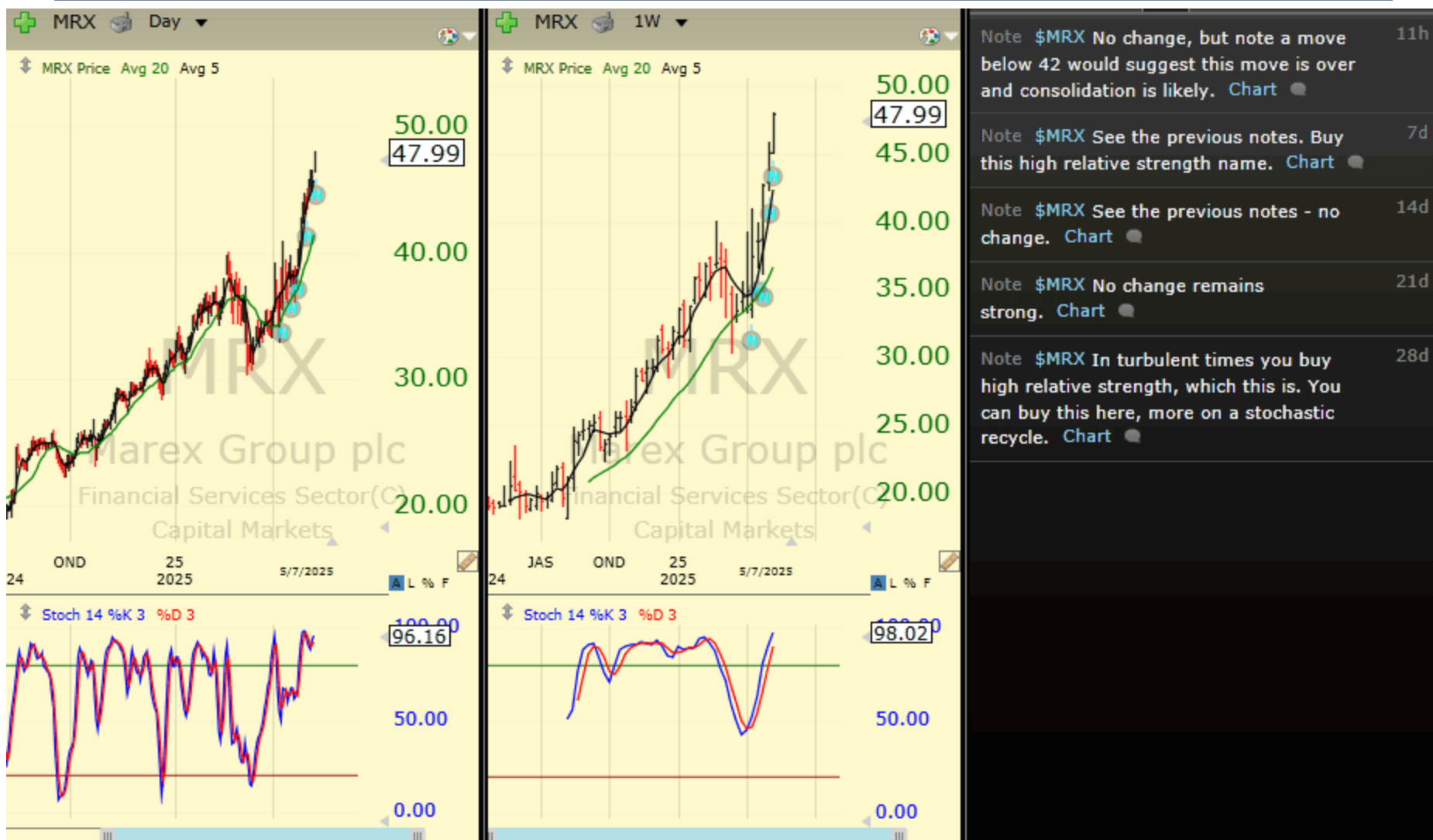
Chartbook: Stocks of Interest



Chartbook: Stocks of Interest



Chartbook: Stocks of Interest



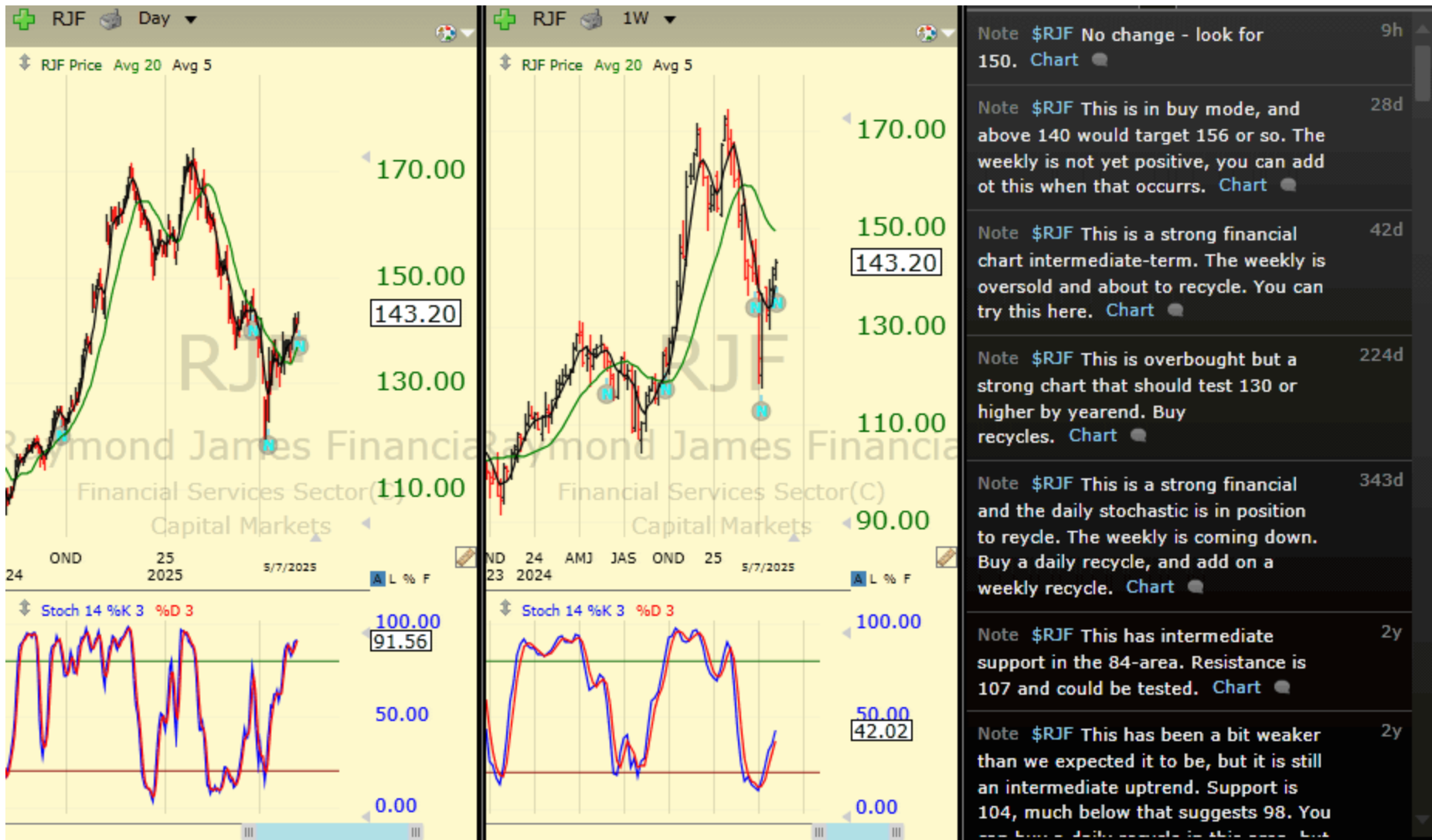
Chartbook: Stocks of Interest



Chartbook: Stocks of Interest



Chartbook: Stocks of Interest



Chartbook: Stocks of Interest



Chartbook: Stocks of Interest



Chartbook: Stocks of Interest



Chartbook: Stocks of Interest



Chartbook: Stocks of Interest



Chartbook: Stocks of Interest



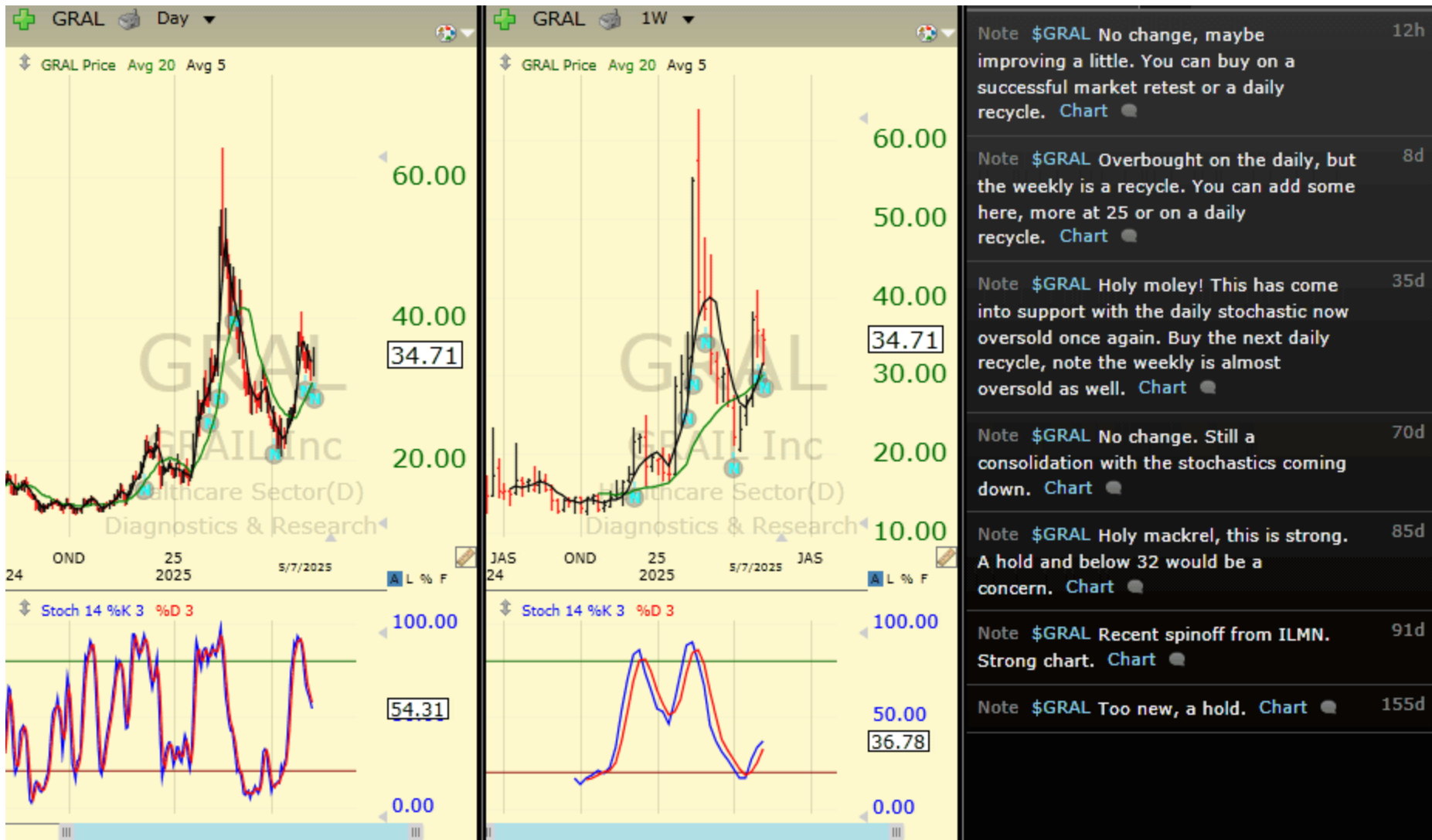
Chartbook: Stocks of Interest



Chartbook: Stocks of Interest



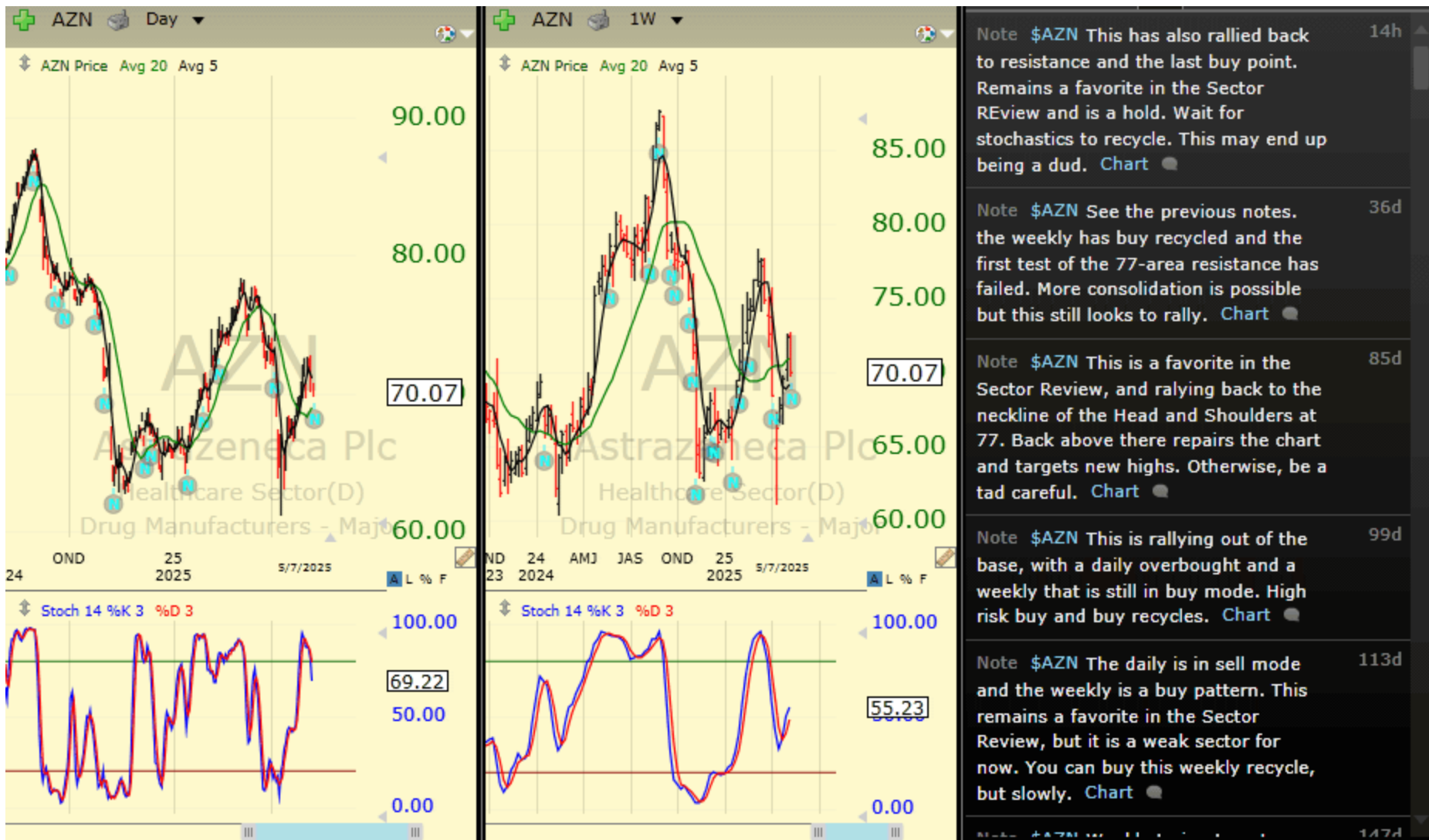
Chartbook: Stocks of Interest



Chartbook: Stocks of Interest



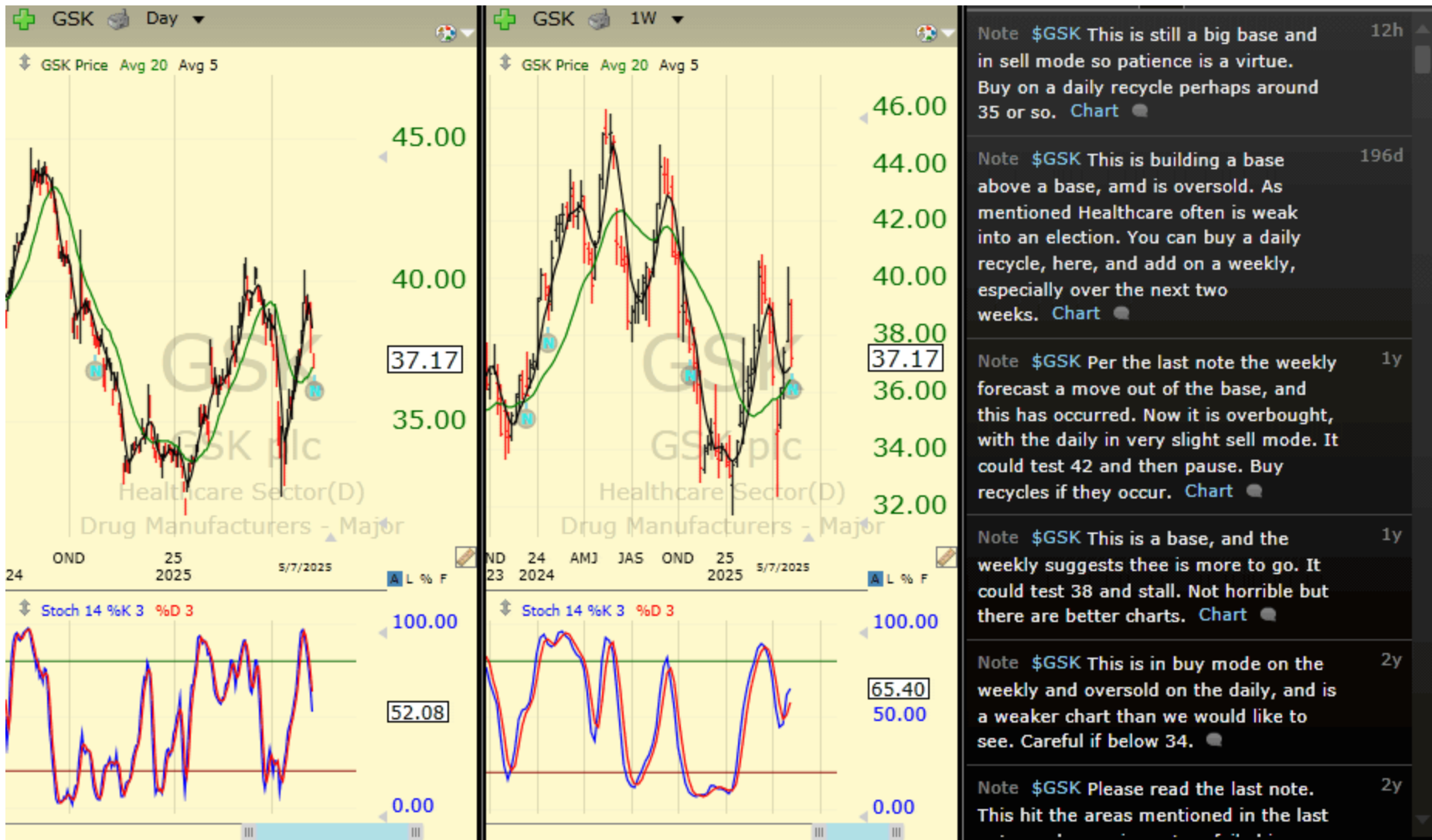
Chartbook: Stocks of Interest



Chartbook: Stocks of Interest



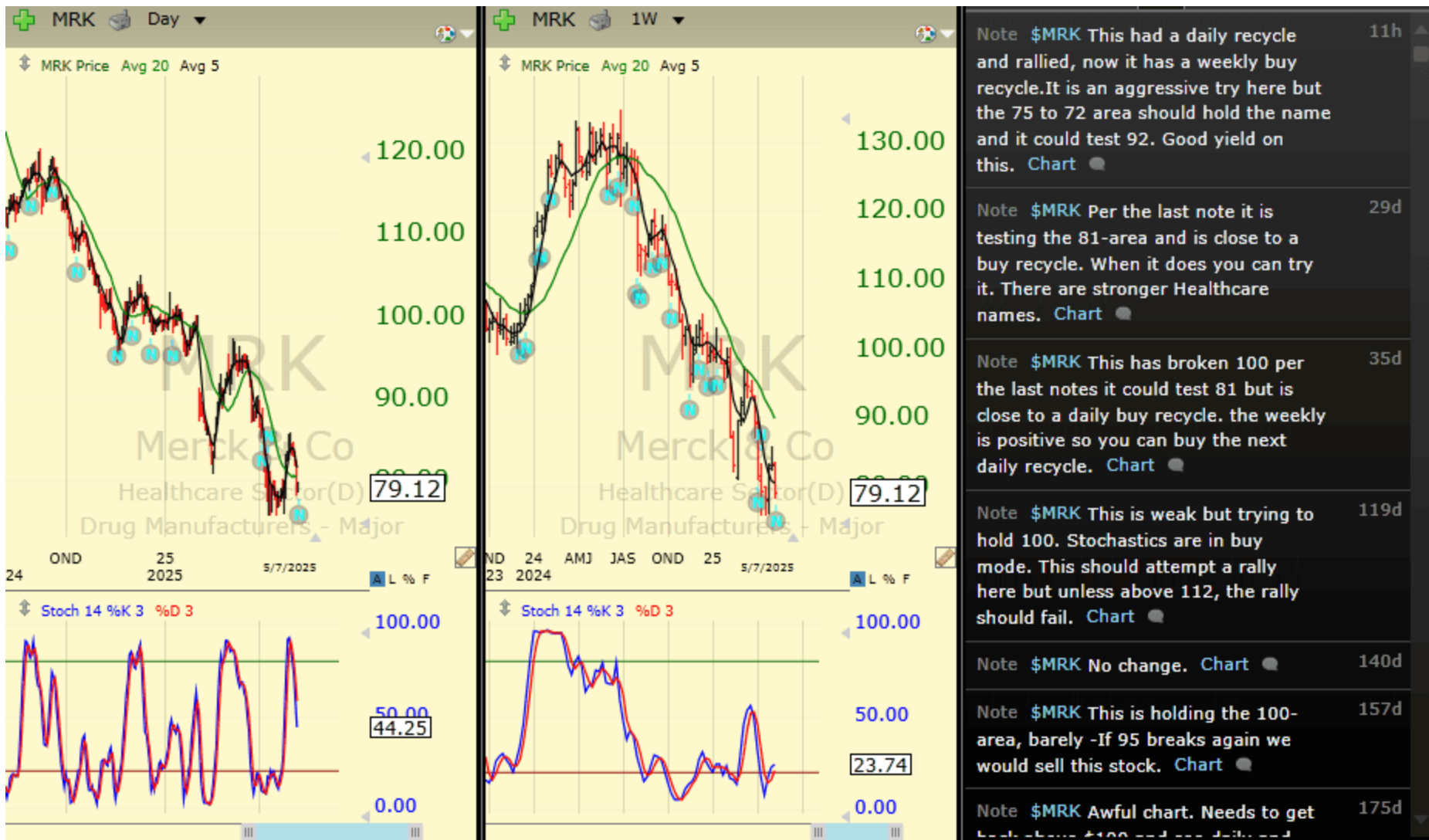
Chartbook: Stocks of Interest



Chartbook: Stocks of Interest



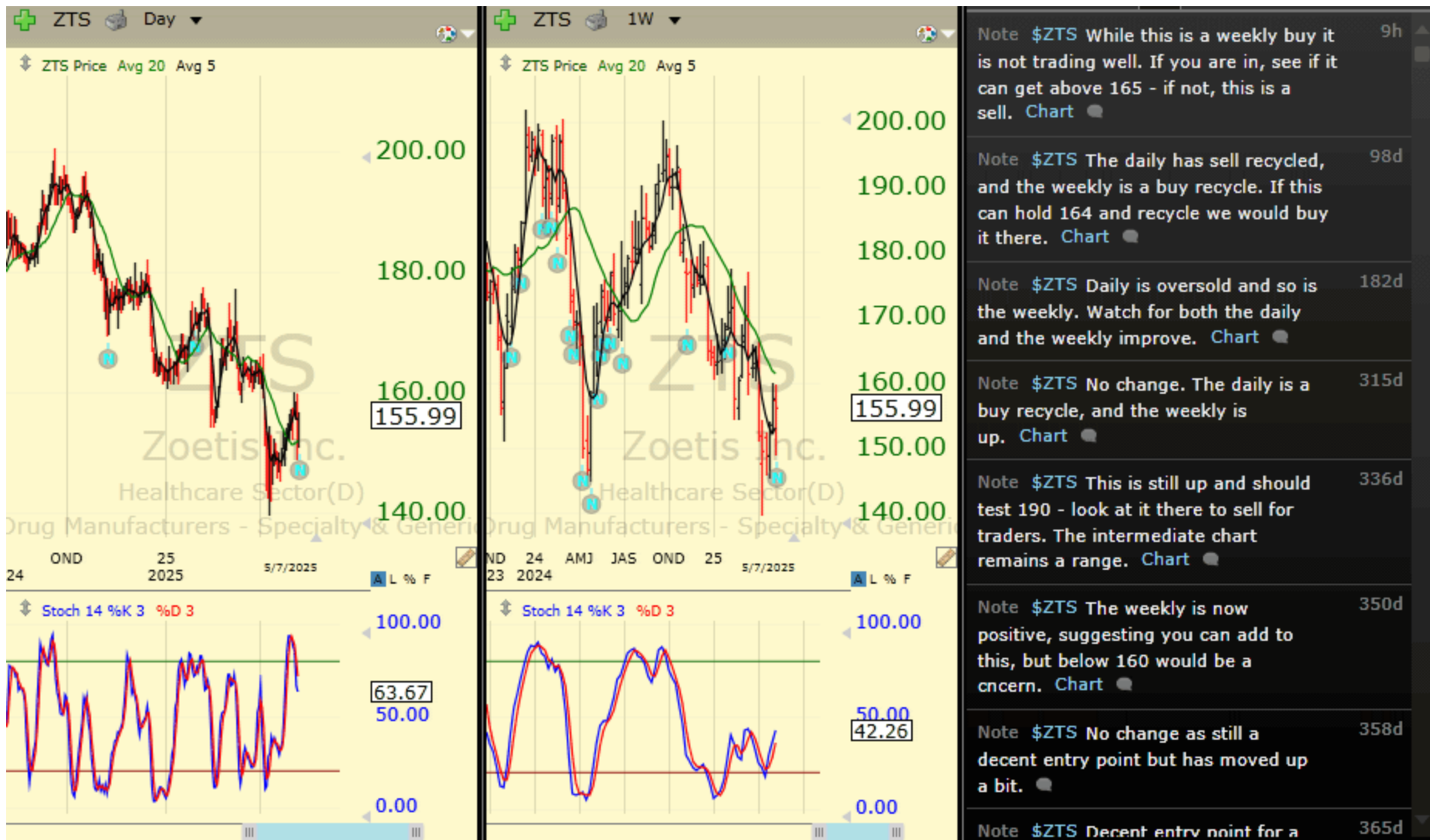
Chartbook: Stocks of Interest



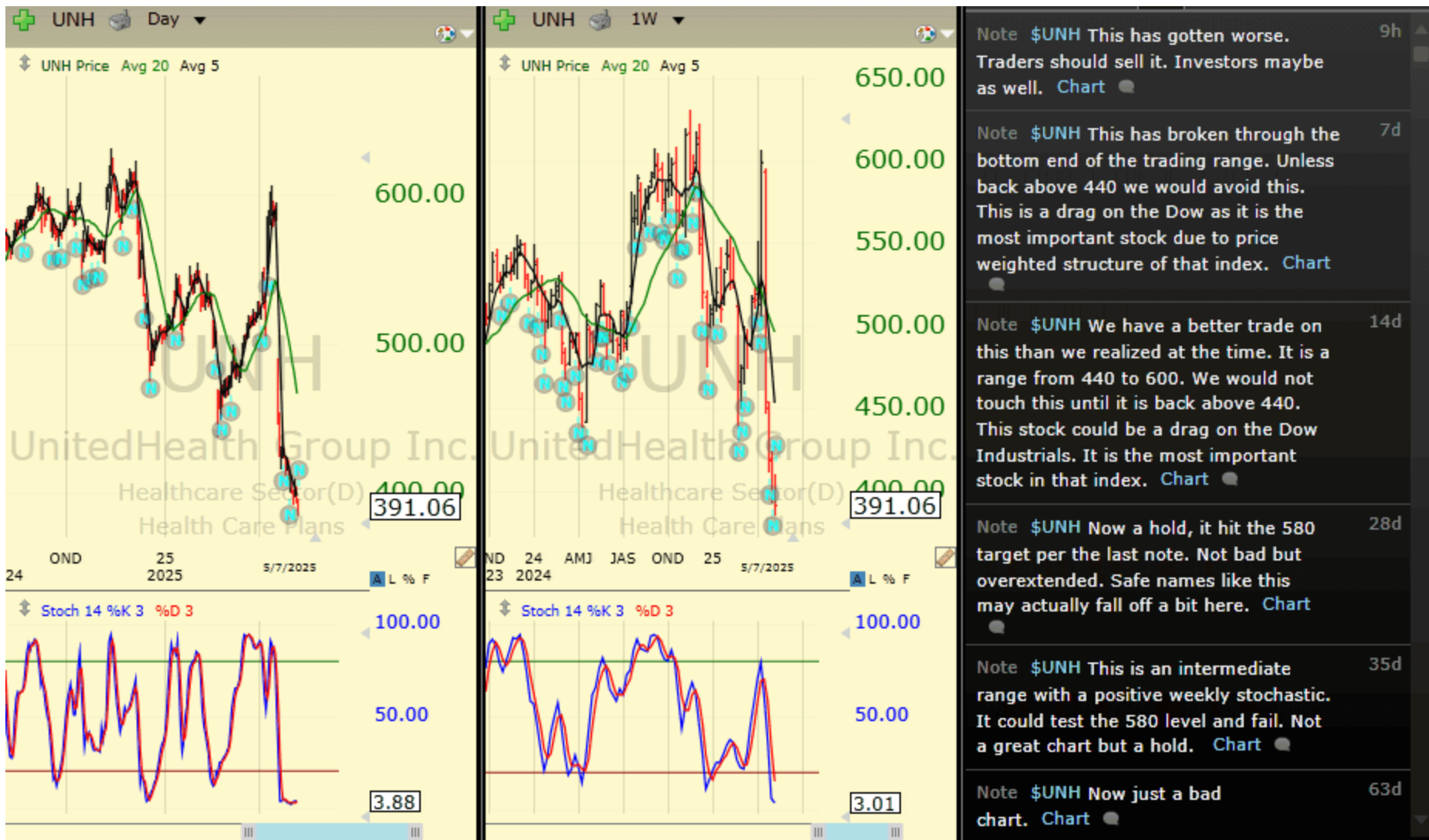
Chartbook: Stocks of Interest



Chartbook: Stocks of Interest



Chartbook: Stocks of Interest



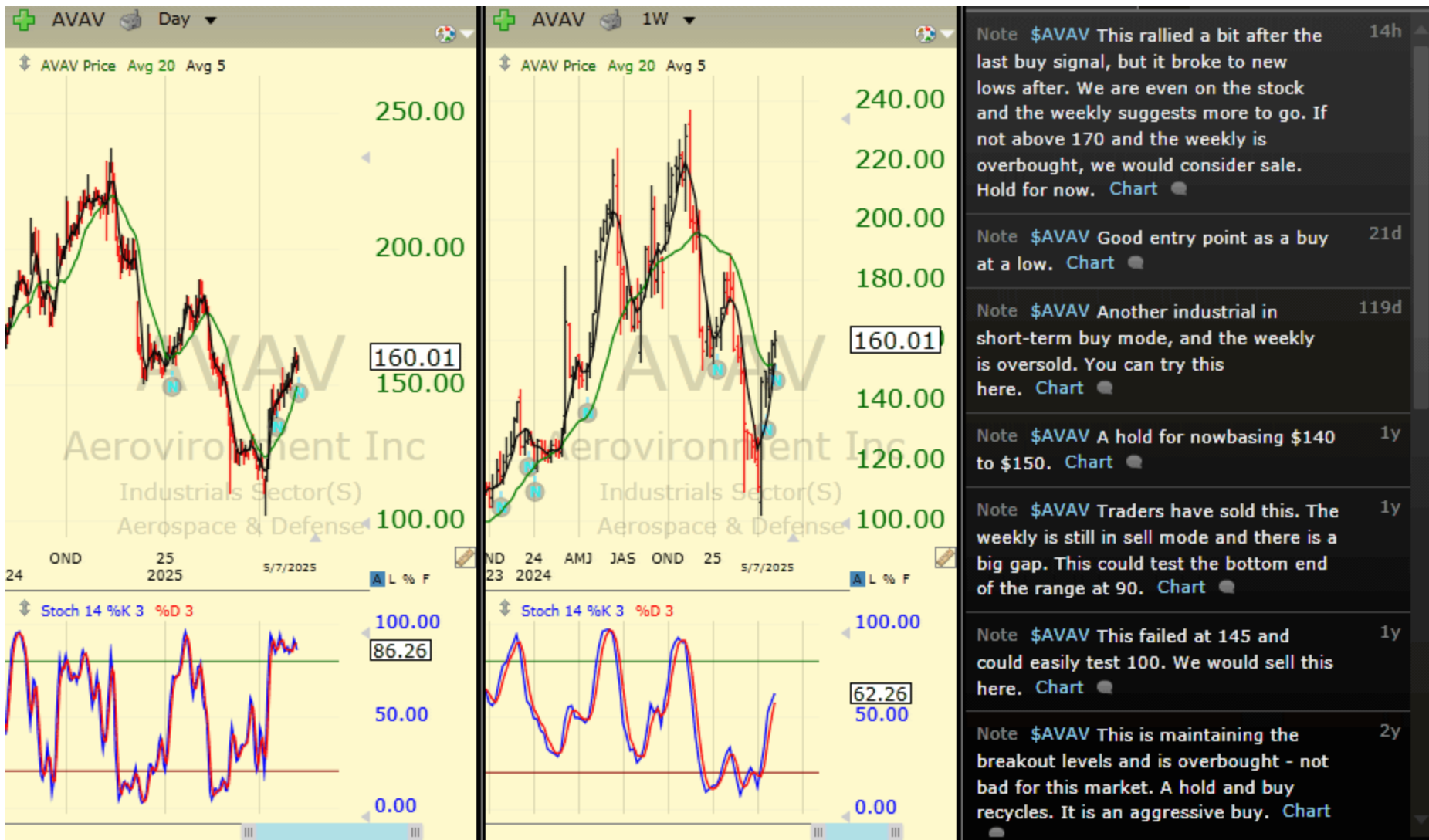
Chartbook: Stocks of Interest



Chartbook: Stocks of Interest



Chartbook: Stocks of Interest



Chartbook: Stocks of Interest

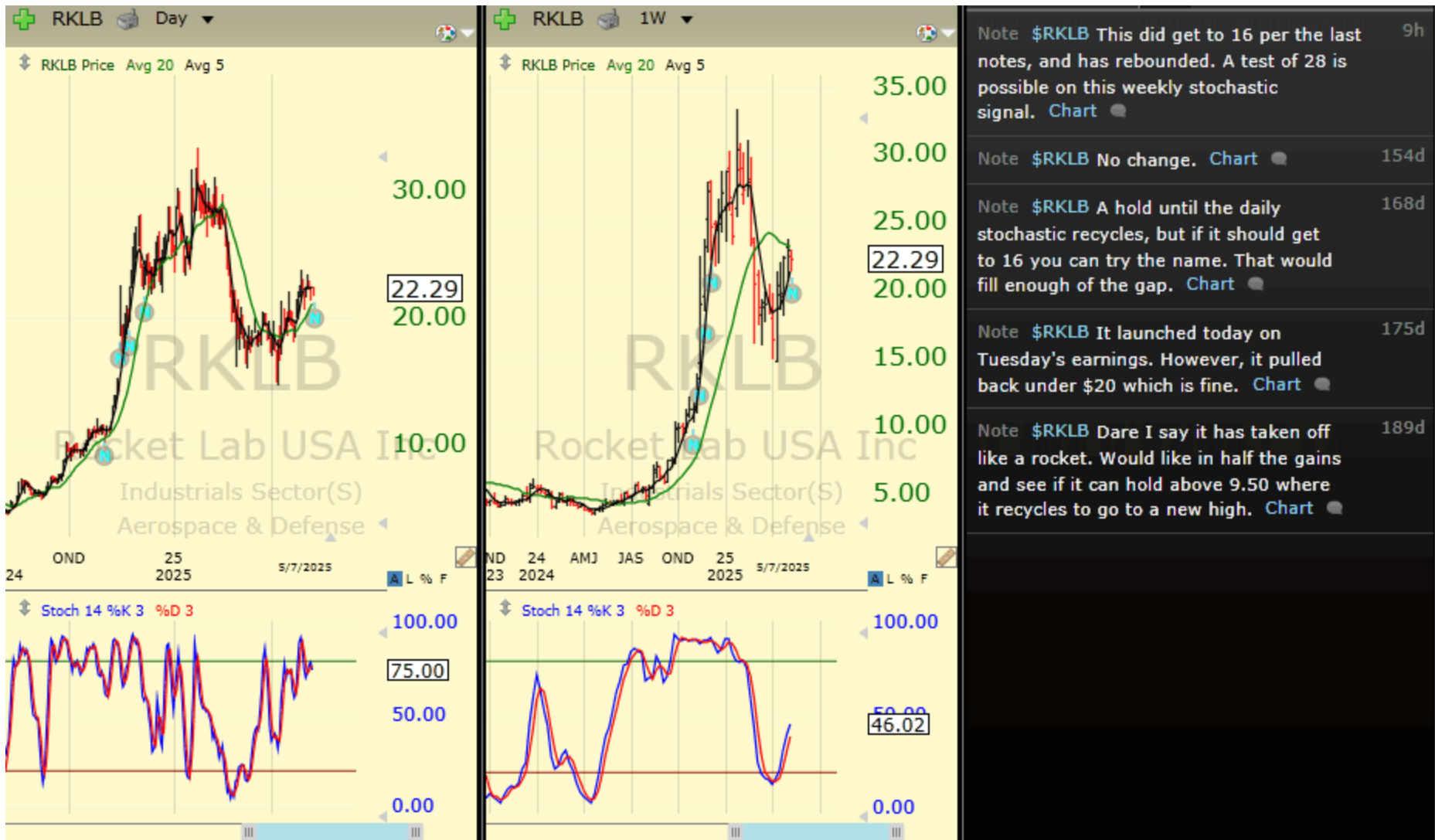


Chartbook: Stocks of Interest

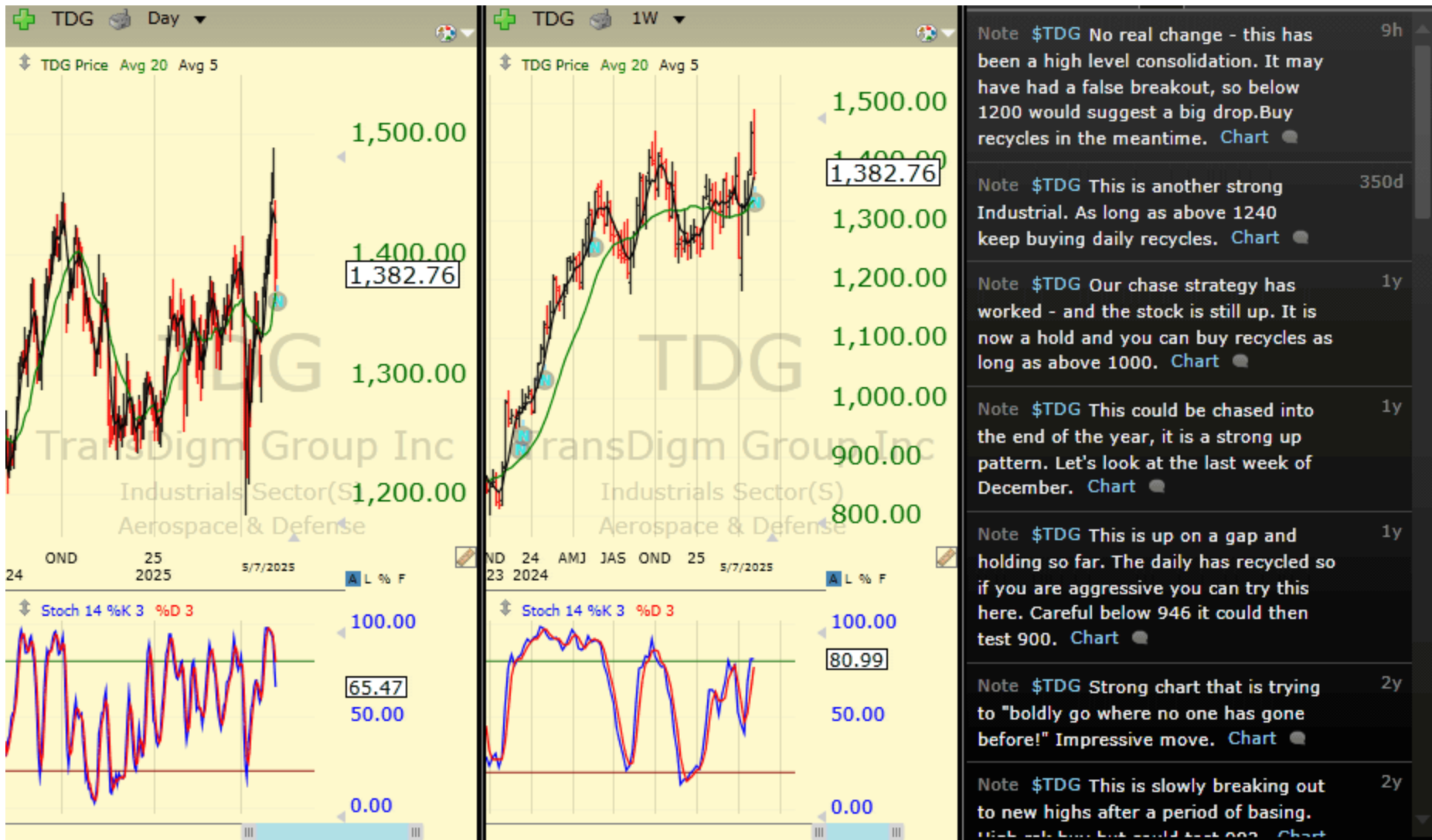


- Note \$DRS Our last buy signal worked. Now overbought and a hold, but overall we continue to like this name. [Chart](#) 12h
- Note \$DRS This has pulled back to intermediate-term support at 29 or so, and is holding. The daily is a buy recycle and the weekly is close. WE would buy this here. [Chart](#) 63d
- Note \$DRS This is still a stair step up, and a daily recycle. It is a limited chart so be careful on a break of 118. You can try the long side. [Chart](#) 1y
- Note \$DRS Again - limited but appears to be a stair step up. Below 14 is a sale. [Chart](#) 2y
- Note \$DRS This is all over the place, and too limited to really analyze. Below 13.50 would probably end this rally. [Chart](#) 2y
- Note \$DRS Recent IPO. Rolling over would lock in gains before it revisits where it came from. [Chart](#) 2y

Chartbook: Stocks of Interest



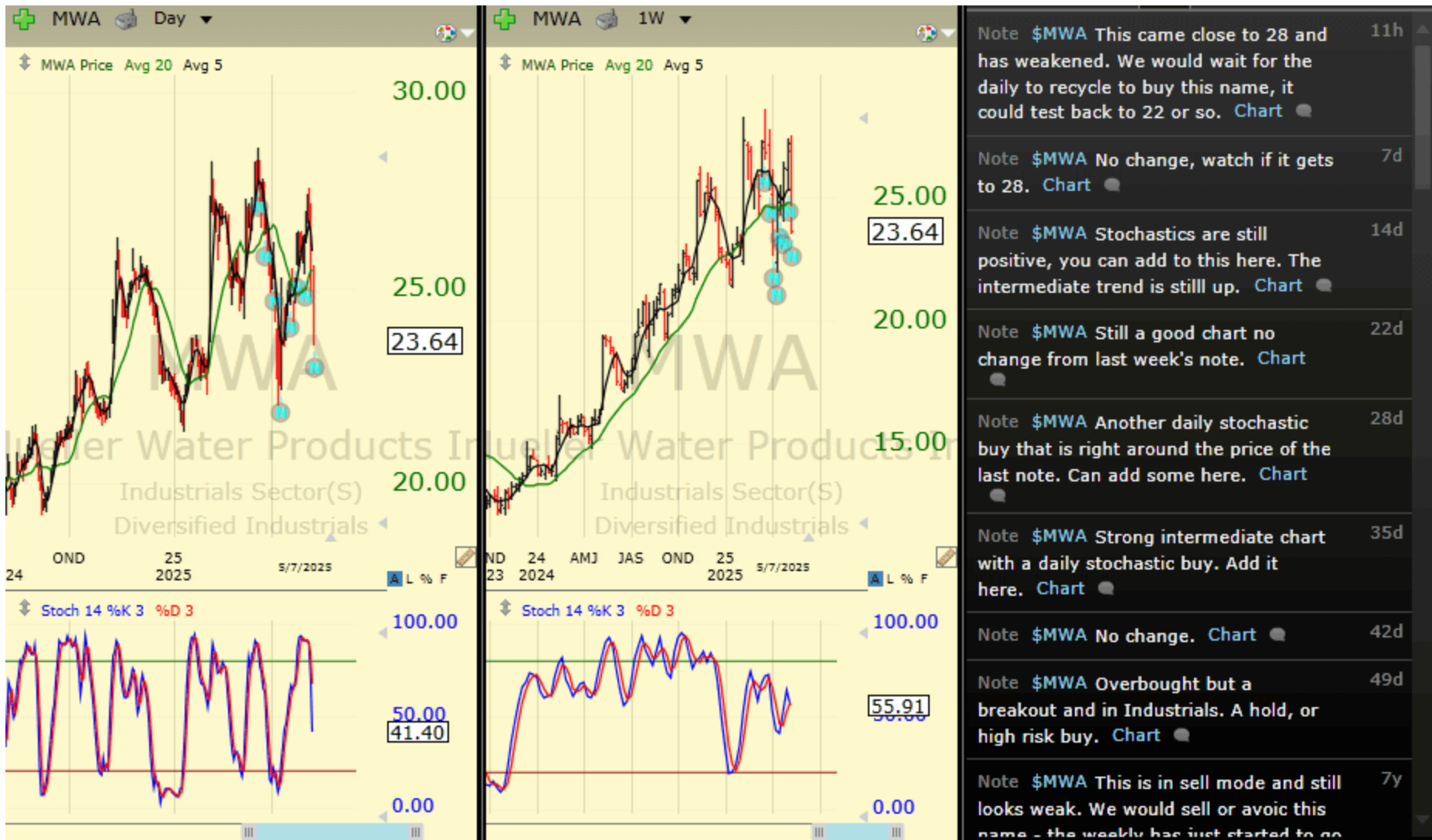
Chartbook: Stocks of Interest



Chartbook: Stocks of Interest



Chartbook: Stocks of Interest



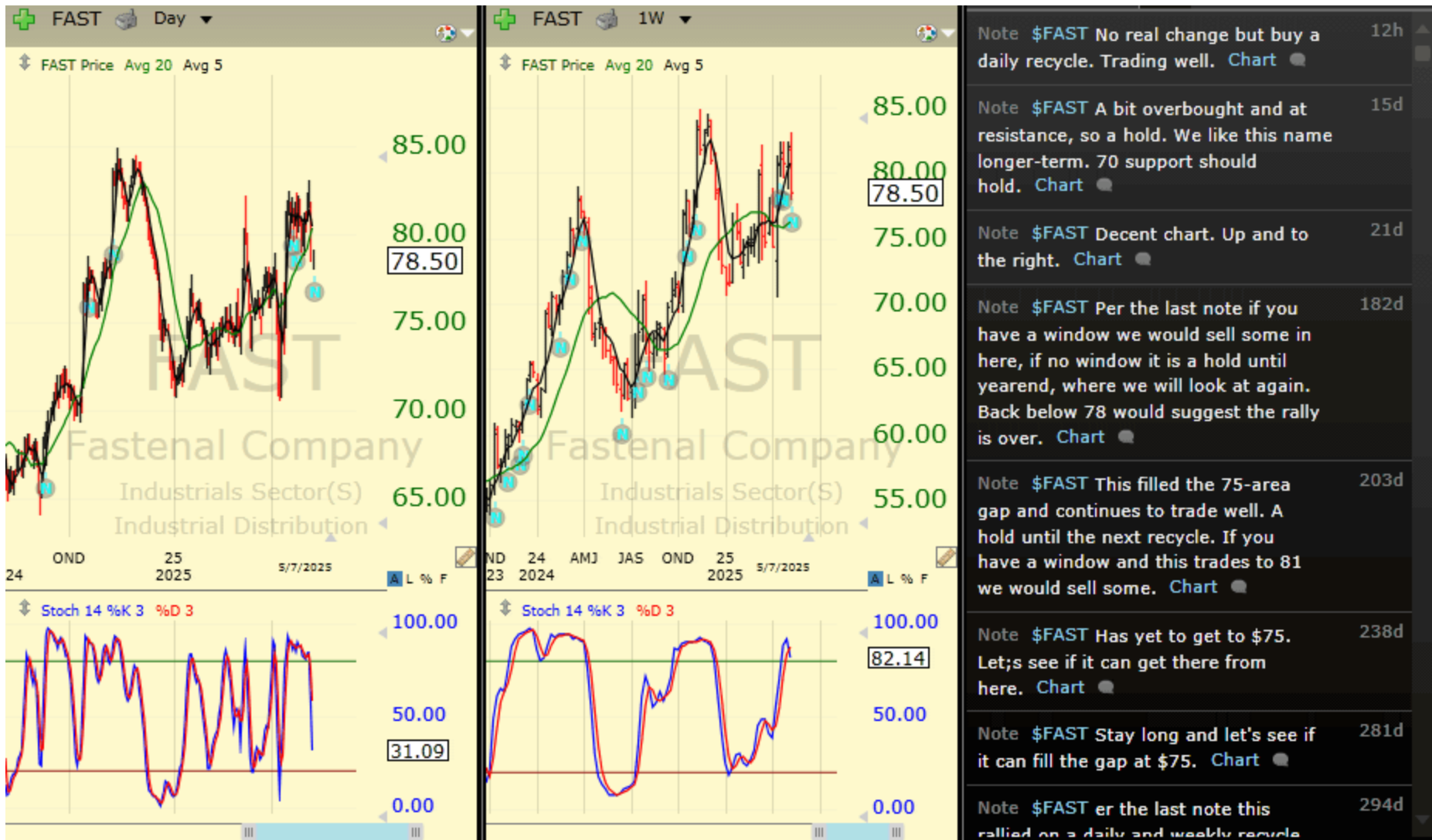
Chartbook: Stocks of Interest



Note \$NDSN This has had a weekly recycle but at big new lows for the stock. It needs to get back above 205 to correct these problems. With the daily in sell mode this is high risk as the trend is quite down. Careful. [Chart](#)

Note \$NDSN Another weekly stochastic that has not completely recycled. Look for a bit lower, at 124, and then if the daily stochastic turns up we would buy the name. This is a range, and looks more attractive than LITE. [Chart](#)

Chartbook: Stocks of Interest



Chartbook: Stocks of Interest



Chartbook: Stocks of Interest



Note \$LECO Sideways chart that is in sell moe. Also the short-term trend is down and a bit "icky". Let's be just a tad careful of this name. [Chart](#)

11h

Note \$LECO This is trying to hold and the daily is in buy mode, but it is weaker than we would like to see. Below 175 would be a concern and could lead to a test of 140. There are better Utilities. [Chart](#)

35d

Note \$LECO Per the last note this did buy recycle on the daily, but from lower. Now the weekly is also a new buy recycle. You can add some more to this. [Chart](#)

105d

Note \$LECO This filled a bit more of the gap and is still in sell mode. Traders can add a little here, but wait for a daily recycle to go in bigger. Not a terrible chart, could turn into a range from 175 to 250 or so. [Chart](#)

168d

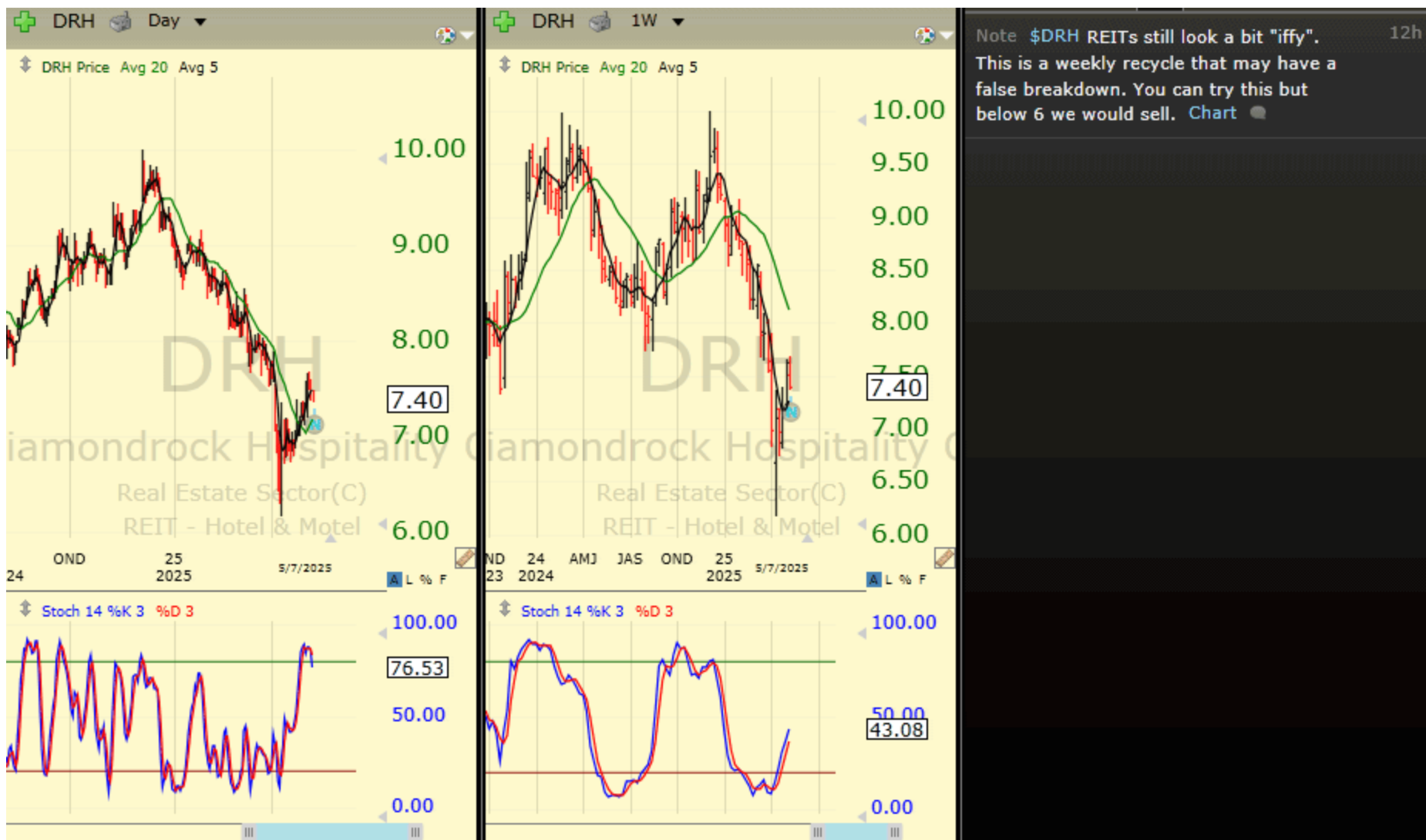
Note \$LECO We noted this name could hit \$210 and it did. Would remain in this name. [Chart](#)

175d

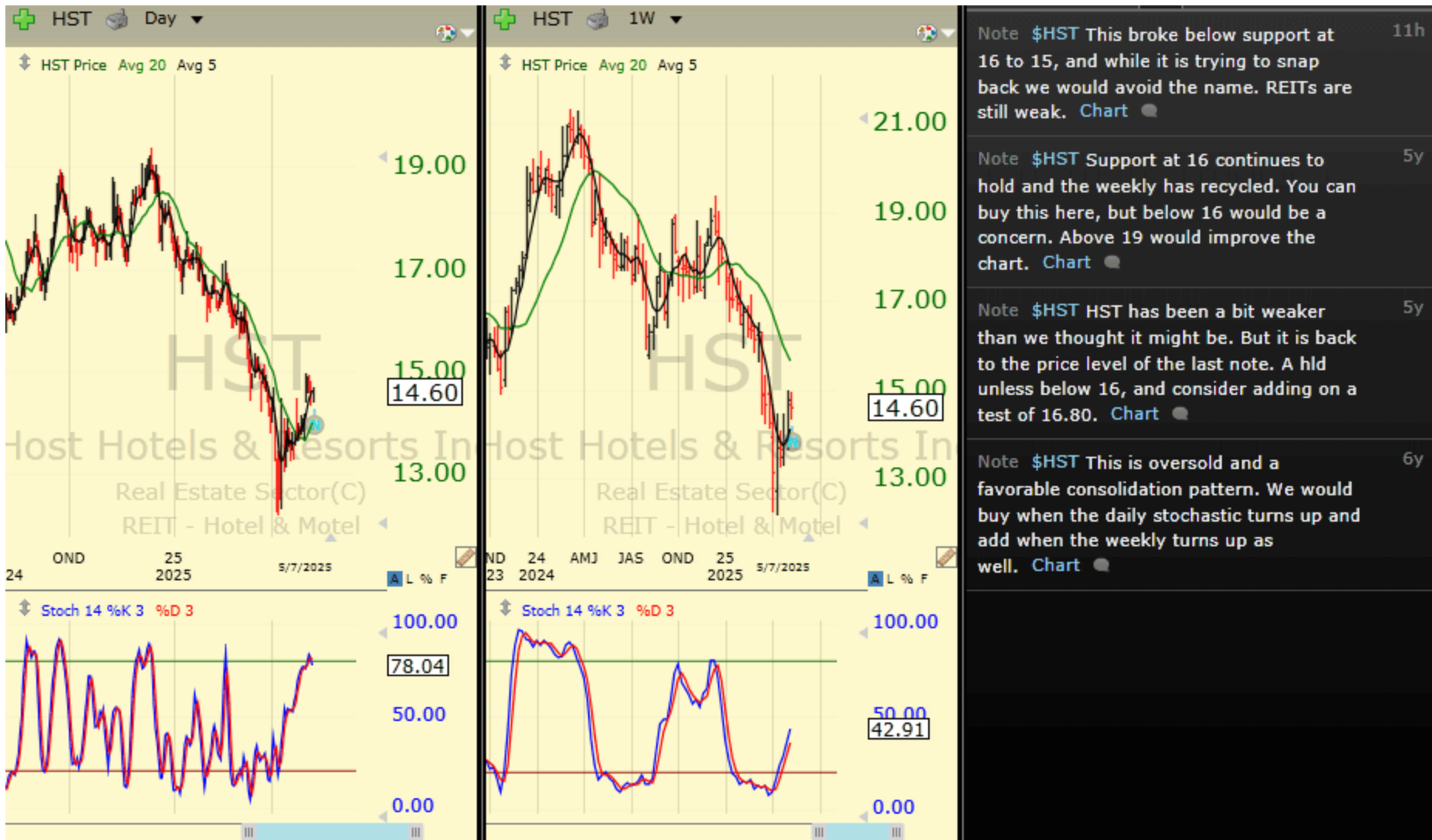
Note \$LECO A base with a weekly recycle, so you can try and buy this here. A test of 210 is possible at

189d

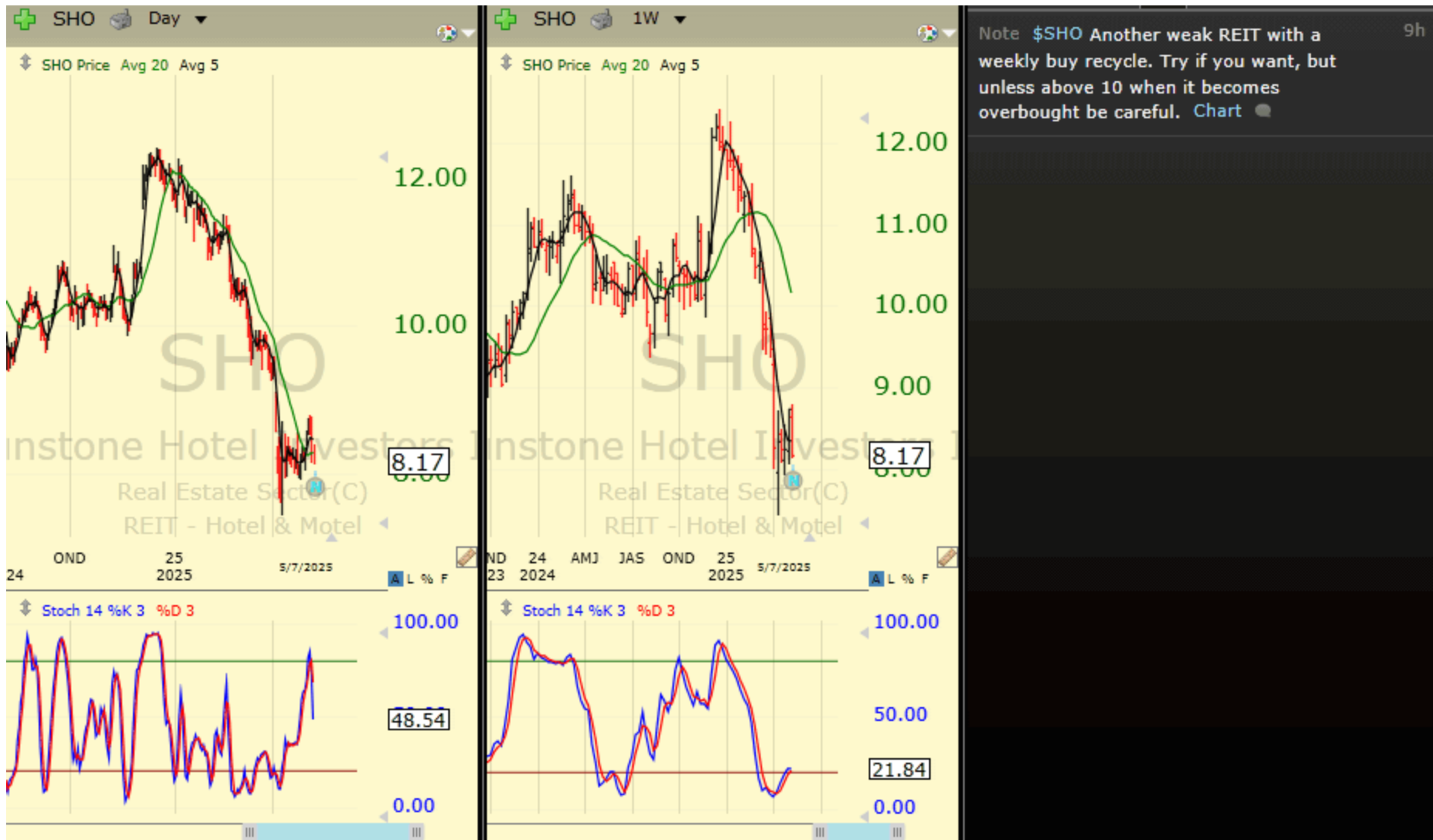
Chartbook: Stocks of Interest



Chartbook: Stocks of Interest



Chartbook: Stocks of Interest



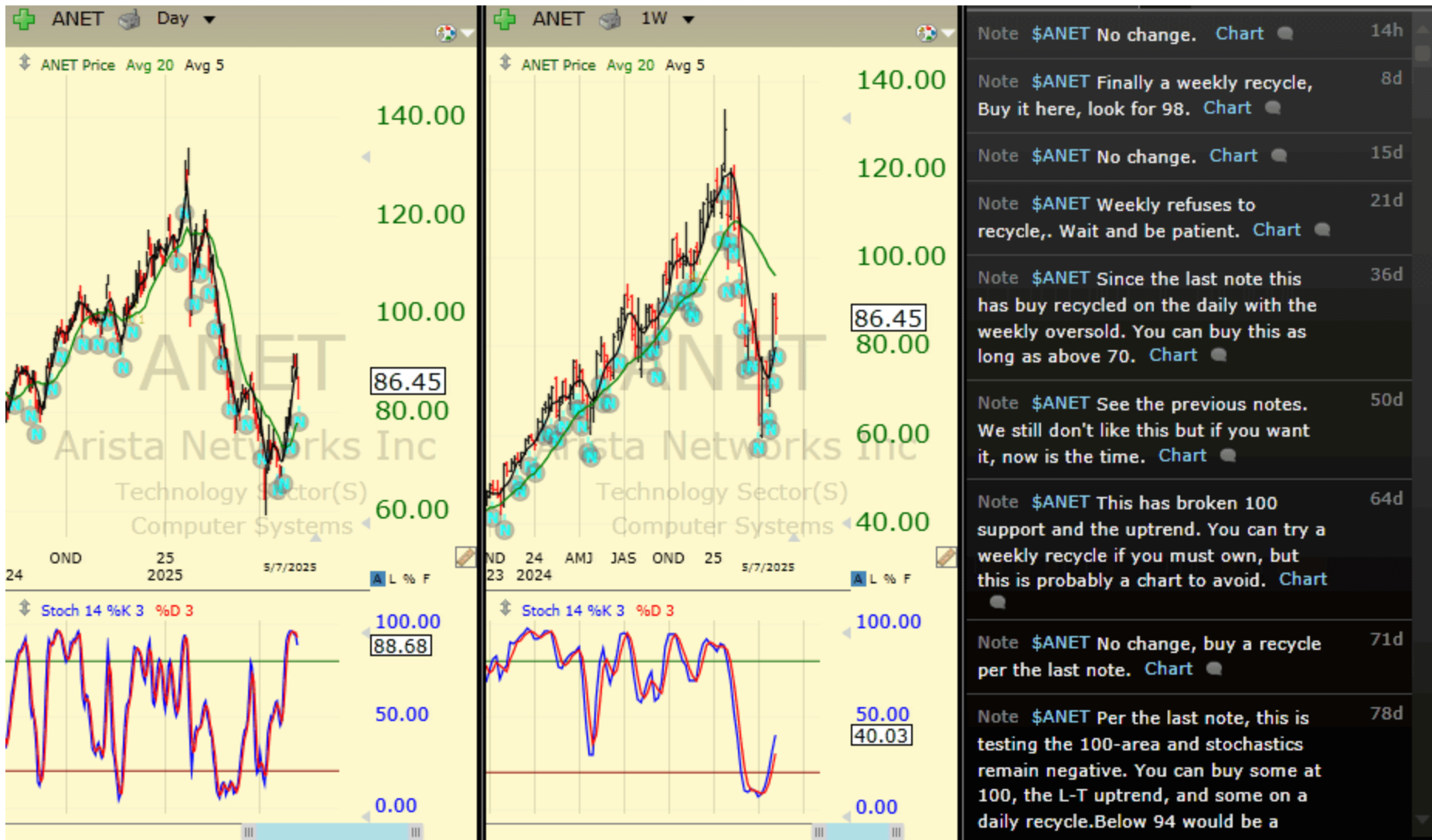
Chartbook: Stocks of Interest



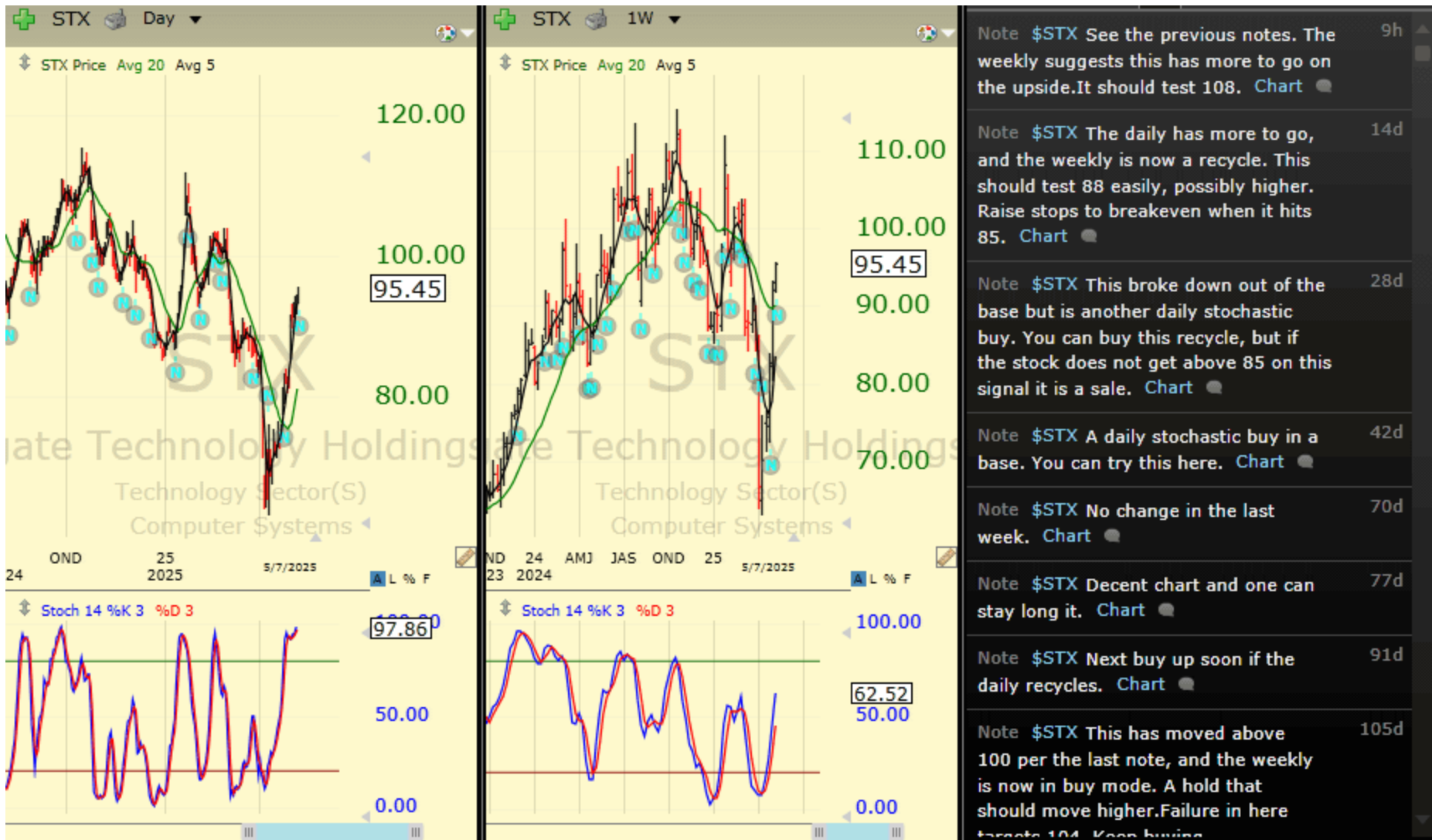
Chartbook: Stocks of Interest



Chartbook: Stocks of Interest



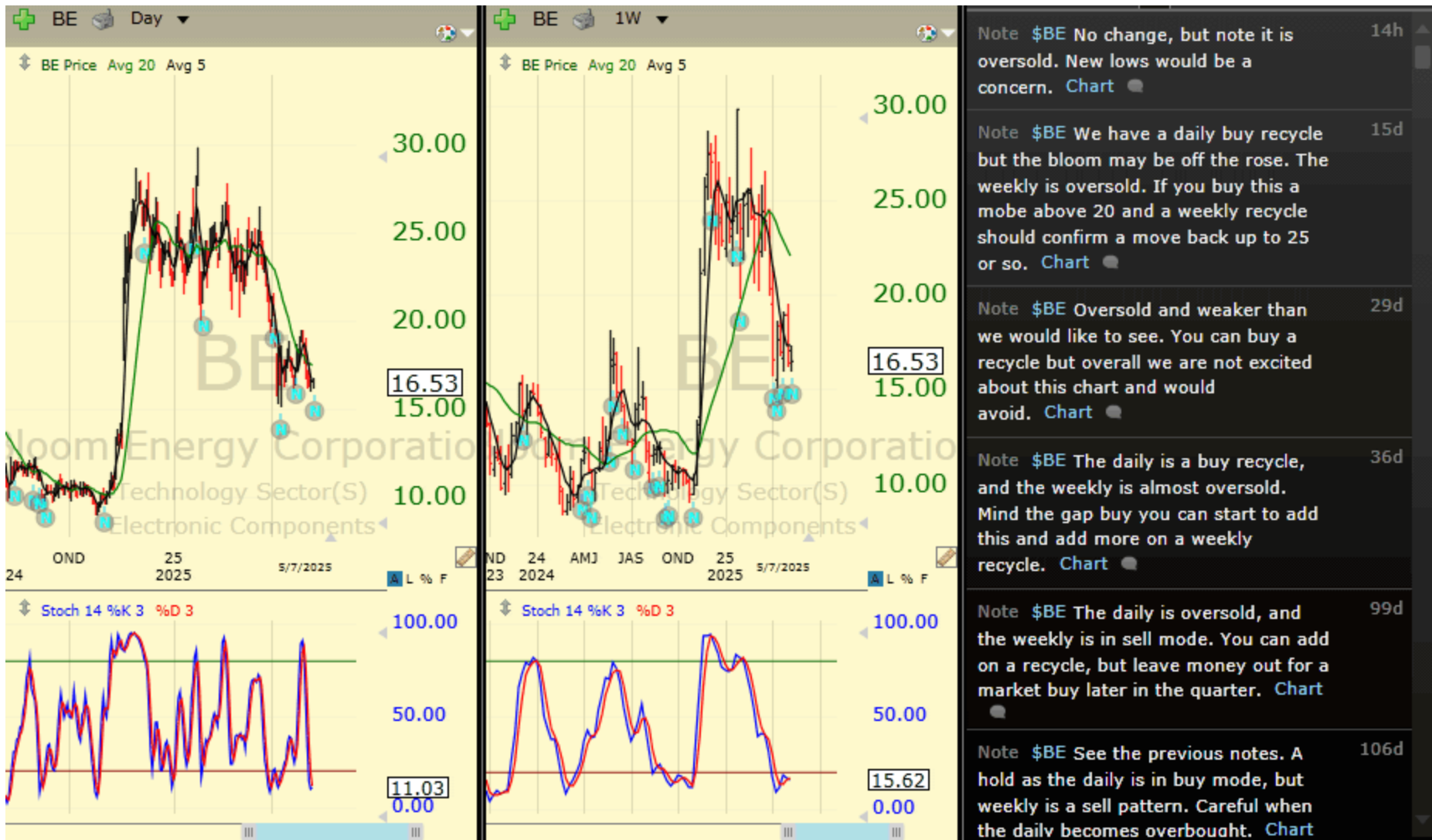
Chartbook: Stocks of Interest



Chartbook: Stocks of Interest



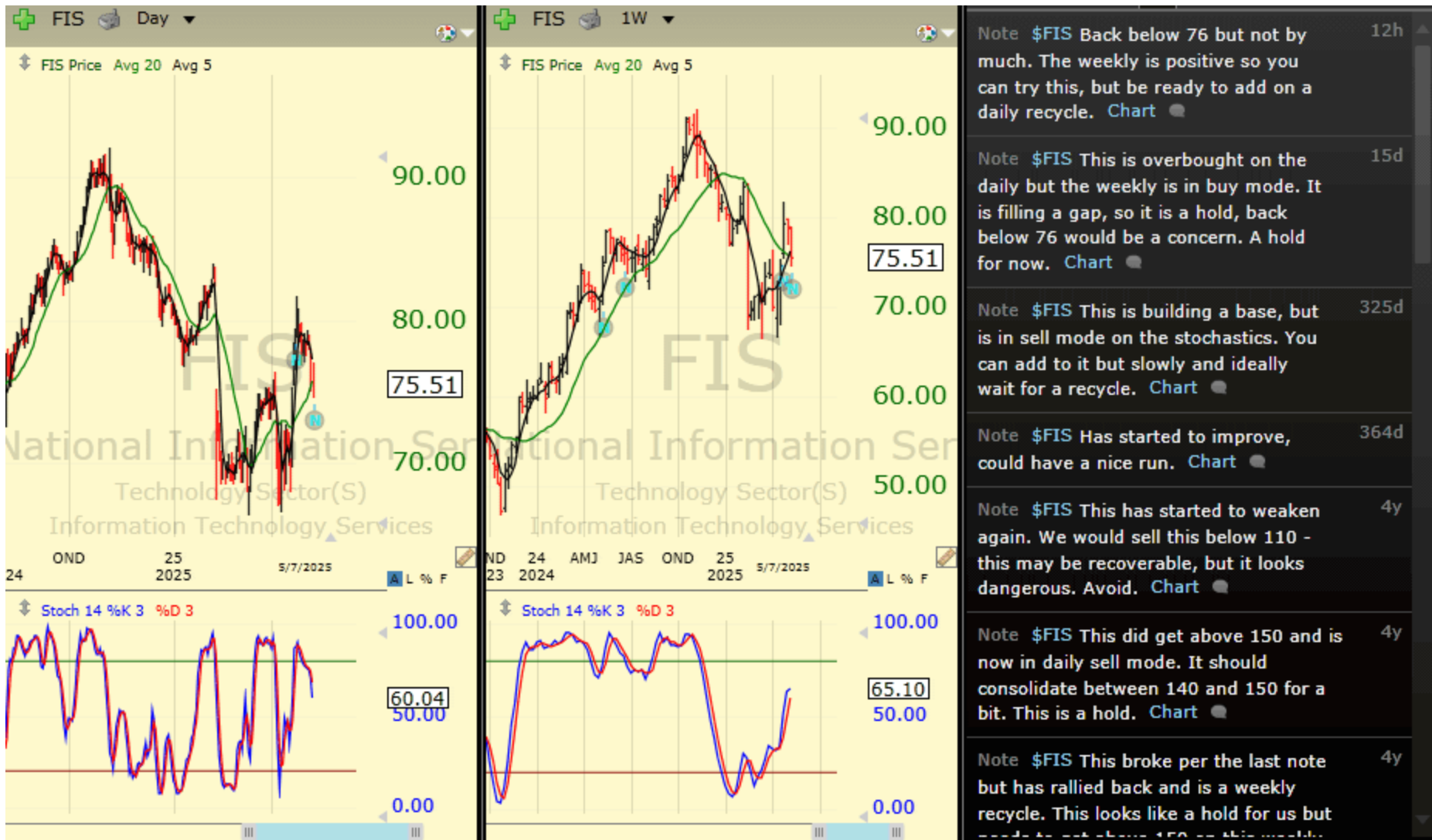
Chartbook: Stocks of Interest



Chartbook: Stocks of Interest



Chartbook: Stocks of Interest



Chartbook: Stocks of Interest



Chartbook: Stocks of Interest



Chartbook: Stocks of Interest



Chartbook: Stocks of Interest



Chartbook: Stocks of Interest



Chartbook: Stocks of Interest



Chartbook: Stocks of Interest



Chartbook: Stocks of Interest



Chartbook: Stocks of Interest



Chartbook: Stocks of Interest



Chartbook: Stocks of Interest



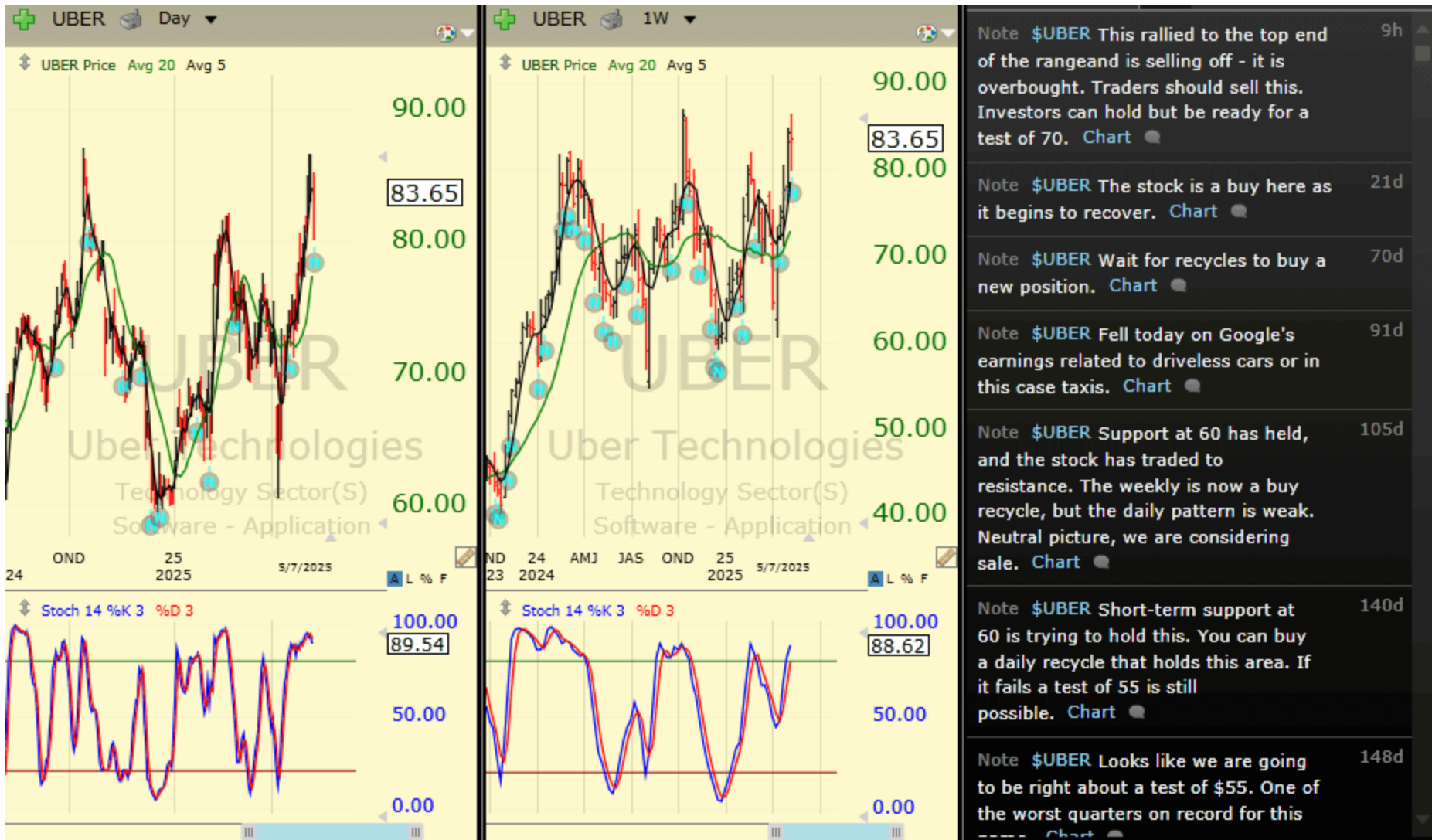
Chartbook: Stocks of Interest



Chartbook: Stocks of Interest



Chartbook: Stocks of Interest



Chartbook: Stocks of Interest



Chartbook: Stocks of Interest



Chartbook: Stocks of Interest



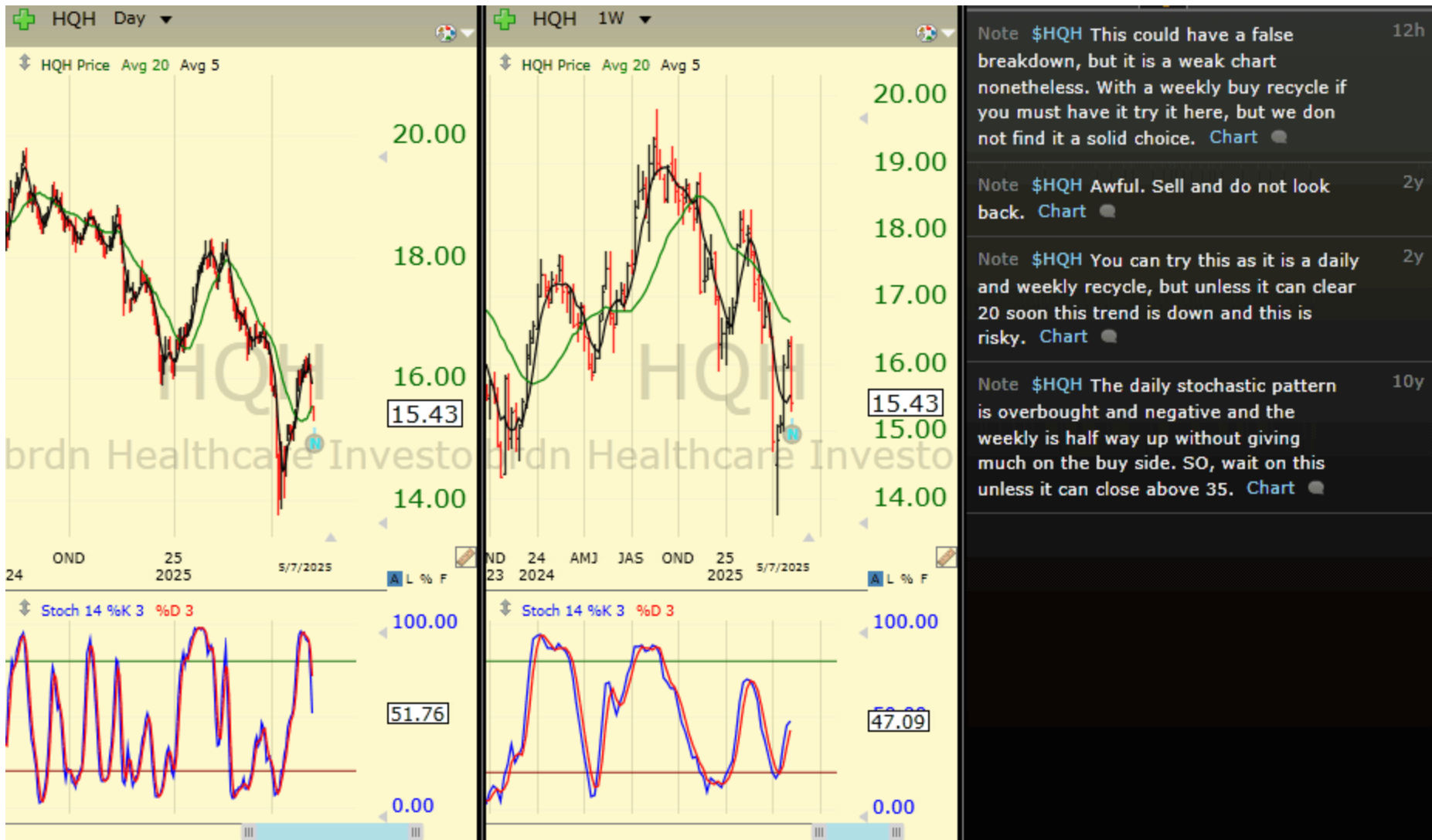
Chartbook: Stocks of Interest



Chartbook: Stocks of Interest



Chartbook: Stocks of Interest



Chartbook: Stocks of Interest



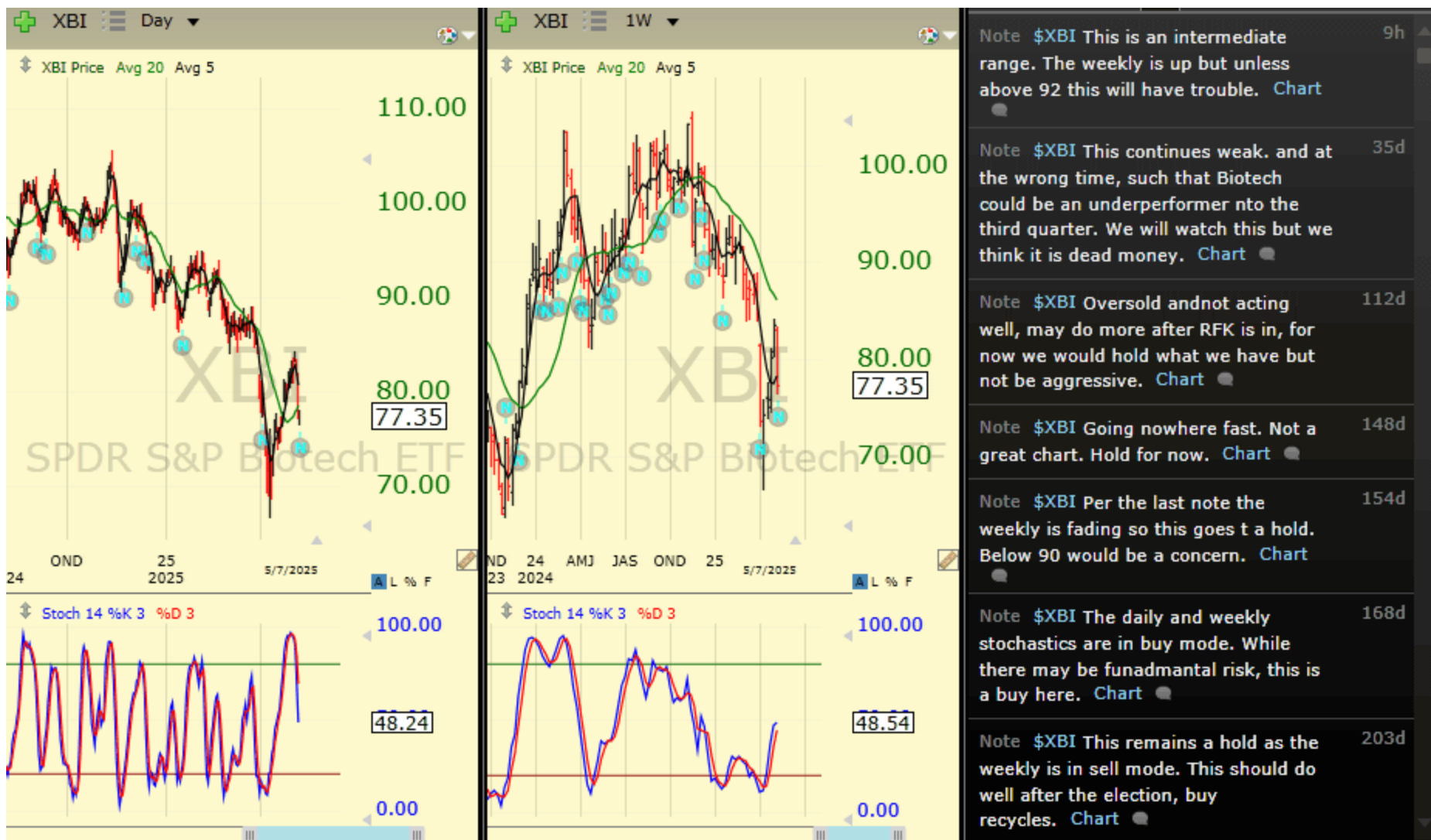
Chartbook: Stocks of Interest



Chartbook: Stocks of Interest



Chartbook: Stocks of Interest



Technical Indicators

Readers will note that we use the same indicators on all of the charts in this presentation. We append definitions of these indicators and are available via the website: [Education and Training Center](#).

Technicals Defined

Moving Averages:

Moving averages are one of the building blocks of Technical Analysis, and there are almost as many ways to use this indicator as there are technicians.

At the FRED report we teach and use a dual moving average crossover system to determine trend. Our favorites are the 5 period and 20 period moving averages. We consider the trend to be up if the 5 is above the 20, and down if below it.

Stochastics:

The Stochastic Oscillator is one of the commonly used momentum oscillators and is standard on charting programs. There are two lines on the chart below, %K and %D.

%K is the faster of the two lines, and represents a mathematical formula that *measures where the current close is in relation to the trading range of the last "X" periods of time*. We use a 14 period look-back, so in plain English %K says where the current close is in the trading range of the last 14 days, expressed as a %.

At the FRED report we use it somewhat differently than is commonly taught. The standard way to use the indicator is to register a buy signal when it moves below, and then above, 20 (the lowest 20% of closing prices in the last 14 days). A sell signal is when the indicator moves above, and then below 80 (the highest 80% of closes over the last 14 days).

The other line, %D, is a 3 period moving average of %K. We have found that the Stochastic is sensitive, so we advocate taking signals only in the direction of the trend. When looking at the standard FRED report chart, this would mean taking buy signals when the 5 is above the 20, and sell signals when the 5 is below the 20, but using a different technique to exit positions. The reason for this is the Stochastic is quite sensitive, and can give early indications, especially in new trends. It also can get "stuck" in the direction of trends, which connotes strength and not weakness. Another, preferred interpretation, is to use the indicator to measure risk. An example: buy in an uptrend, not when the stochastic is at 90% but rather wait until it falls below 50%. This way, even if a stock, commodity, or ETF does not give one of the "classic" signals, you can still use the indicator to assess risk, and leg into positions.

The FRED Report

Financial Research, Education & Data

The FRED Report (www.theFREDreport.com) was started to provide Financial Advisors and investors access to unbiased market research. The President of The Fred Report, **Fred Meissner, CMT** has been practicing Technical Market Analysis since 1983 and has worked in the research departments of Merrill Lynch and Robinson – Humphrey /Smith Barney. In addition he has served the public as a portfolio manager and financial advisor. We know the problems investors face and have devoted our career to helping find the best possible investments in all environments.

