

# The FRED Report – Mid Week Update

## Update of Market View

### Special points of interest:

- These big “one day wonder” type of rallies are consistent with bear markets, and as such the action would tend to confirm that this rally is a selling opportunity, and our retest scenario is alive and well.
- When the economy starts to emerge from recession, or recession fears, Small Cap stocks often perform better.
- We could see GLD in the 170-area or so, and TLT back to 100, but will monitor these carefully as the week progresses.

The stock market has started to rally, as we suggested it might this week, in our [Weekly Report](#). While the intraday structure of the rally was reasonably good, generally **these big “one day wonder” type of rallies are consistent with bear markets, and as such the action would tend to confirm that this rally is a selling opportunity, and our retest scenario is alive and well.**

We expect a choppy day Wednesday, with a slight down close, followed by an up Thursday and Friday – and this sort of action would suggest this up-move has legs that could carry for more than a week. In fact, our ideal scenario would be an up week this week, a down week next week, and then further strength the week of September 5<sup>th</sup>. If this sort of action occurs, that would tend to suggest a retest of the lows would be successful. If tomorrow is another super strong up day we would start to sell into the rally.

**When the economy starts to emerge from recession, or recession fears, Small Cap stocks often perform better.** We show daily and weekly charts of the IJR (iShares S&P Small Cap ETF) and note that it is still outperforming large caps. Should we see more recession fears, we would expect large caps to show some out-performance.

We note that GLD and TLT have started to come down. We could see GLD in the 170-area or so, and TLT back to 100, but will monitor these carefully as the week progresses.



**THE FRED REPORT**

4514 Chamblee-  
Dunwoody Road

Suite 112

Dunwoody, GA 30338

Phone:

(404) 875-FRED

Website:

[www.theFREDreport.com](http://www.theFREDreport.com)

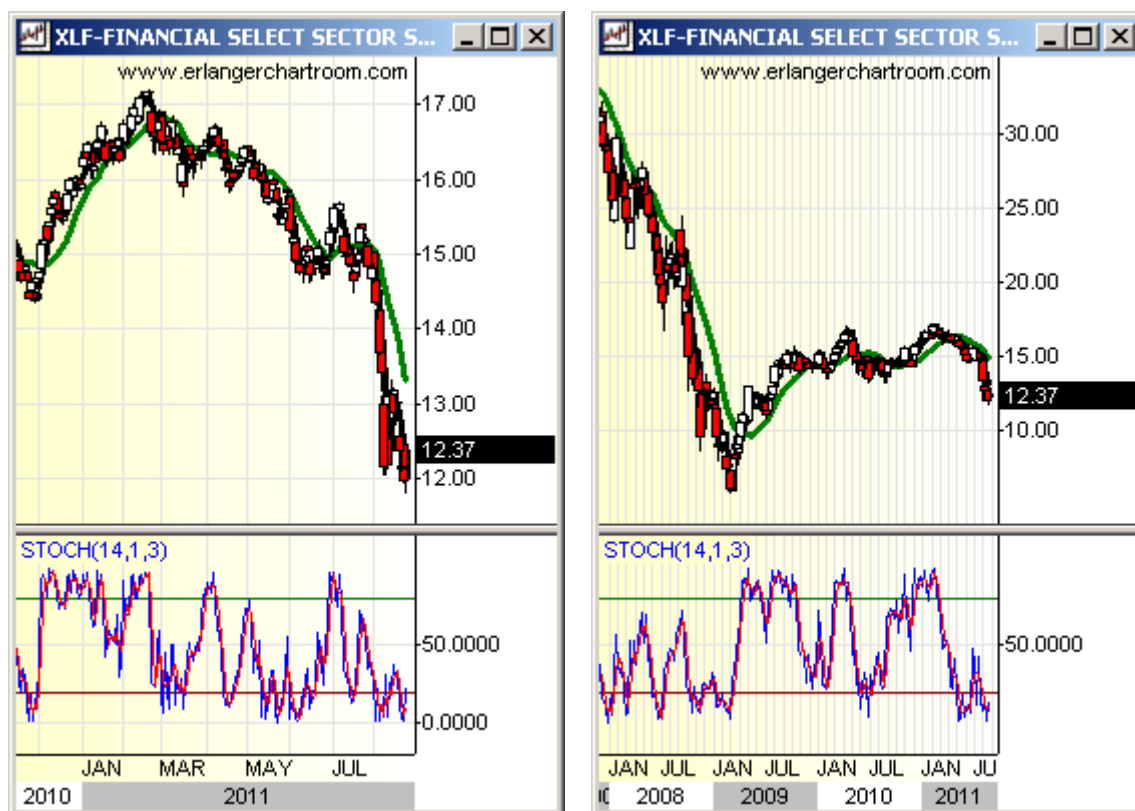
E-Mail:

[fred@thefredreport.com](mailto:fred@thefredreport.com)

## Other Points of Interest

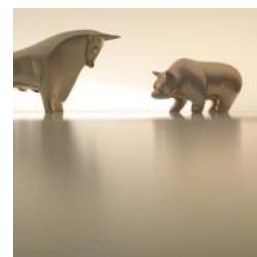
We were asked an interesting question on a conference call: “Could we have a strong advance into the end of the year, without strong performance from the financials?” Our answer to this question is a qualified YES. We say this for two reasons. First, look at the rally from the March 2009 lows, which put Small and Mid-Cap indexes at all-time highs, during which the financials under-performed. Second – let’s assume the XLF rallies back to 14.50 – the breakdown point. That would be a 16% or so rally in XLF from here, which would help the market move up, even if other sectors outperformed.

While at this point it is too early to make a yearend rally forecast (we would want to see improvement in the indicators and a successful retest), out-performance by financials would not be needed or expected. We show daily and weekly charts of XLF below, and invite readers to compare them to the Small Cap index charts in the first section of this report.



## About Our Organization

The FRED Report was started to provide Financial Advisors across firms and platforms access to unbiased market research. The President of The Fred Report, Fred Meissner, CMT has been practicing Technical Market Analysis since 1983 and has worked in the research departments of Merrill Lynch and Robinson – Humphrey /Smith Barney. In addition he has served the public as a portfolio manager and financial advisor. We know the problems advisors face and have devoted our career to helping advisors find the best possible investments in all environments. We want to help you help your clients and grow your business.



## Disclaimers:

*Research used in this report does not purport to be comprehensive or to contain all the information which a prospective investor may need in order to make an investment decision. The information is based on publicly available information and sources, which the publisher believes to be reliable, but does not represent to be accurate or complete, and it should not be relied on as such. The publisher may update any research report as it determines appropriate, in its sole discretion. Each reader of this report must make its own investigation and assessment of the information presented herein. No representation, warranty or undertaking, express or implied, is or will be made or given and no responsibility or liability is or will be accepted by Fredco Holdings, Inc. or by any of its directors, officers, employees, agents or advisers, in relation to the accuracy or completeness of this presentation or any written or oral information made available in connection with the information presented herein. Any responsibility or liability for any such information is expressly disclaimed. Any person or entity who does rely on this report does so at his/her own risk and by doing so assumes all liability for any such loss, harm or other detriment.*

*The information contained herein was prepared by Fredco Holdings, which is solely responsible for the contents of this report.*

*All prices provided within this research report are a snapshot taken as soon as practicable prior to the release of the report. No representation is made as to the current prices of securities.*